

LIPA SIXTH FORM COLLEGE

WHERE PERFORMANCE MATTERS



**PROSPECTUS
SEPTEMBER
2017 ENTRY**

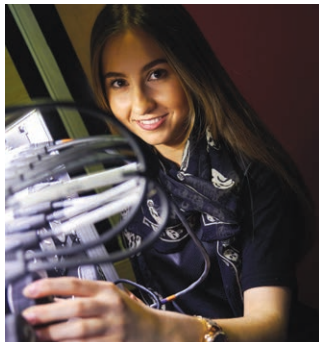
Practical learning for the creative and performing arts

WHY CHOOSE US?

LIPA Sixth Form College offers nationally-recognised BTEC Level 3 Extended Diploma courses focusing only on creative and performing arts disciplines. Studying with us offers you...



A small, yet specialist, post-school learning environment, where you will meet people, like you, who live and breathe the creative and performing arts.



Practical project-based learning which helps you to take creative risks to grow your knowledge, interests and technical abilities in a safe, supportive environment.



Access to professional equipment and facilities, within a purpose-built learning environment in the heart of Liverpool's Cultural Quarter.



Experienced teaching staff with a range and depth of professional know-how gained in the creative and performing arts economy.



Opportunities to collaborate with students from other disciplines to extend your interests and skills and to complement your chosen course.



Access to industry contacts, masterclasses and workshops, and guidance from a range of creative and performing arts professionals.



Access to, and engagement with, the creative and performing arts community within Liverpool and beyond.



The opportunity to be part of and to actively and creatively contribute to the ongoing success of the LIPA group.

These are just a few of the benefits you will enjoy...

Our course information outlines (pages 12-17) provide many other reasons why we should be your first choice for BTEC Level 3 creative and performing arts studies.

Welcome to LIPA Sixth Form College's prospectus for students seeking entry to our courses in September 2017.

Opening in September 2016, LIPA Sixth Form College is a new Free School for 16-18 year olds, funded by the Department for Education, and open to students from Liverpool, Merseyside and beyond. We offer only BTEC Level 3 Extended Diploma courses in a range of creative and performing arts disciplines, leading to nationally-recognised qualifications.

The following pages outline what we do, how we do it, and how we can help you work towards achieving your vocational and academic ambitions during your time with us.



ACTING

Creative, flexible, curious and brimming over with ideas? Our Acting course could be for you.



DANCE

Ballet? Jazz? Tap? Contemporary? Or something new? The choice is yours...



MUSIC

For those who live and breathe music, this is the course you're looking for.



SOUND TECHNOLOGY

This course will help to amplify your future career prospects.



DESIGN FOR PERFORMANCE

If you've an eye for design and are ready to experiment creatively and visually, this course will develop the skills you need for a design-driven career



TECHNICAL THEATRE

Do you see yourself working in sound, lighting or stage management? This course will set you on the right path.

CONTENTS

Why choose us?	2
Contents	3
Welcome	4
From our Director	4
About us	5-10
Our ethos, vision & values	5
Our building	6-7
Our facilities	8-9
Studying with us	10-19
Overview of our courses	10
General course questions	11
Acting	12
Dance	13
Music	14
Sound Technology	15
Design for Performance	16
Technical Theatre	17
Student support	18-19
Applying to us	20-25
What are we looking for?	20
Attributes	21
Frequently Asked Questions	22-23
How to apply	24-25
Information for Parents	26-27
Frequently Asked Questions	26-27

Disclaimer: While every effort has been made to ensure that the information contained in this prospectus is accurate at the time of printing, it does not form any contract between LIPA Sixth Form College and any individual. In addition, LIPA Sixth Form College reserves the right to make changes and cannot accept liability arising out of, or in connection with, any such revision.

STAY IN TOUCH!

Keep in touch and up to date with our latest news at LIPA Sixth Form College

@LIPASixthFormCo

facebook.com/lipasixthformcollege

www.lipasixthformcollege.org

FROM OUR DIRECTOR



I hope that this prospectus gives you the information you are looking for and helps you to make the right choice for taking the next step in your learning.

Inspired by the purpose and achievements of The Liverpool Institute for Performing Arts (LIPA), LIPA Sixth Form College focuses on acting, dance, music, sound technology, technical theatre and design for performance. Our students work towards achieving nationally-recognised BTEC Level 3 Extended Diploma qualifications, while at the same time experiencing excellent teaching and the breadth of professional industry experience our teaching team offers.

Influenced by the LIPA ethos of collaborative working across all disciplines and our emphasis on project-based learning, we can provide what you need to prepare for a wide range of creative and performing arts futures.



Opening in September 2016, we are one of the wave of new Free Schools for 16 to 18 year olds, and one of a handful of Further Education providers in England to focus specifically on the creative and performing arts. As a local Sixth Form College, most of our students come from Liverpool and the wider Merseyside area. Our new, purpose-rebuilt facilities are located at 70 Hope Street within the LIPA campus in Liverpool's city centre, offering a studio theatre, recording studio, music technology suites, dance and drama studios, music rehearsal rooms and a scenic design and construction workshop.

In the run-up to opening as a brand new specialist Sixth Form College, we received more applications than we could accept from students wanting to study with us, and we anticipate that 2017's applications will be no different. A significant proportion of our first student intake did not have any formal training or experience in their subject, reinforcing our belief that what matters is not necessarily what you have done previously – we realise

that not everyone will have had the same opportunities so far. As an applicant for 2017 entry, should you be called for interview and audition, your existing abilities and experience will be important, but we will be just as interested in your potential to build on what you have done and to develop your skills with us. We will do our best to make sure that your two years with us will stand you in good stead for going on to Higher Education or straight into work.

In return for your commitment, dedication and hard work, we will devote ourselves to you and your future. Why not join us?

Charles Bartholomew
Director of LIPA Sixth Form College

Disclaimer At the time of printing, course information is still subject to confirmation, and while every effort has been made to ensure it is accurate, it does not form any contract between LIPA Sixth Form College and any individual. In addition, LIPA Sixth Form College reserves the right to make changes and cannot accept liability arising out of, or in connection with, any such revision.

OUR ETHOS, VISION & VALUES

We provide a combination of creative and performing arts qualifications, within a specialist setting. Offering professional excellence and experience through learning and training opportunities, we will equip you to move forwards onto the professional ladder, with a range of performance, design or technical skills and understanding which will prepare you for Higher Education or work.

When considering your application, we will put as much (if not more) emphasis on your aptitude and potential as on your experience. Our learner-focused, project-based approach helps us work closely with you to develop your skills, interests and technical abilities. As a small but specialised Sixth Form College, we can empower you to take creative risks in a safe, supportive environment that lets you grow as an individual – socially, emotionally and practically.



Learning

Our holistic approach to learning means that we will support you to develop socially and emotionally. We want you to leave us as an independent, responsible, resilient and creative individual, with a strong start to your creative and performing studies or career.

Our project-based learning approach will enthuse, inspire and energise you – the knowledge that the work you do (whether on-stage or behind the scenes) will be viewed or listened to is motivation in itself.

Our learning approach will also develop your interpersonal, critical and decision-making abilities – often without you realising it. Such development in learning and professional terms will serve you well, regardless of the path you choose on completing your studies with us.



Our relationship with LIPA

We have grown from the vision of Mark Featherstone-Witty, CEO and Founding Principal of The Liverpool Institute for Performing Arts. As Paul McCartney, LIPA's Lead Patron, says:

"LIPA has proved itself. Now [with LIPA Sixth Form College] we are offering what we do earlier. It's an exciting development."

Being on LIPA's doorstep, you will be among the first to hear about the public season of performances and will be invited to attend events and activities to get a more in-depth insight into what it would be like to study there at university.

If you decide to apply to LIPA, you'll need to compete with everyone else applying. However, the shared ethos and approach to creative and performing arts learning and training will give you a strong foundation to progress in whichever direction you choose when you leave us.

LIPA

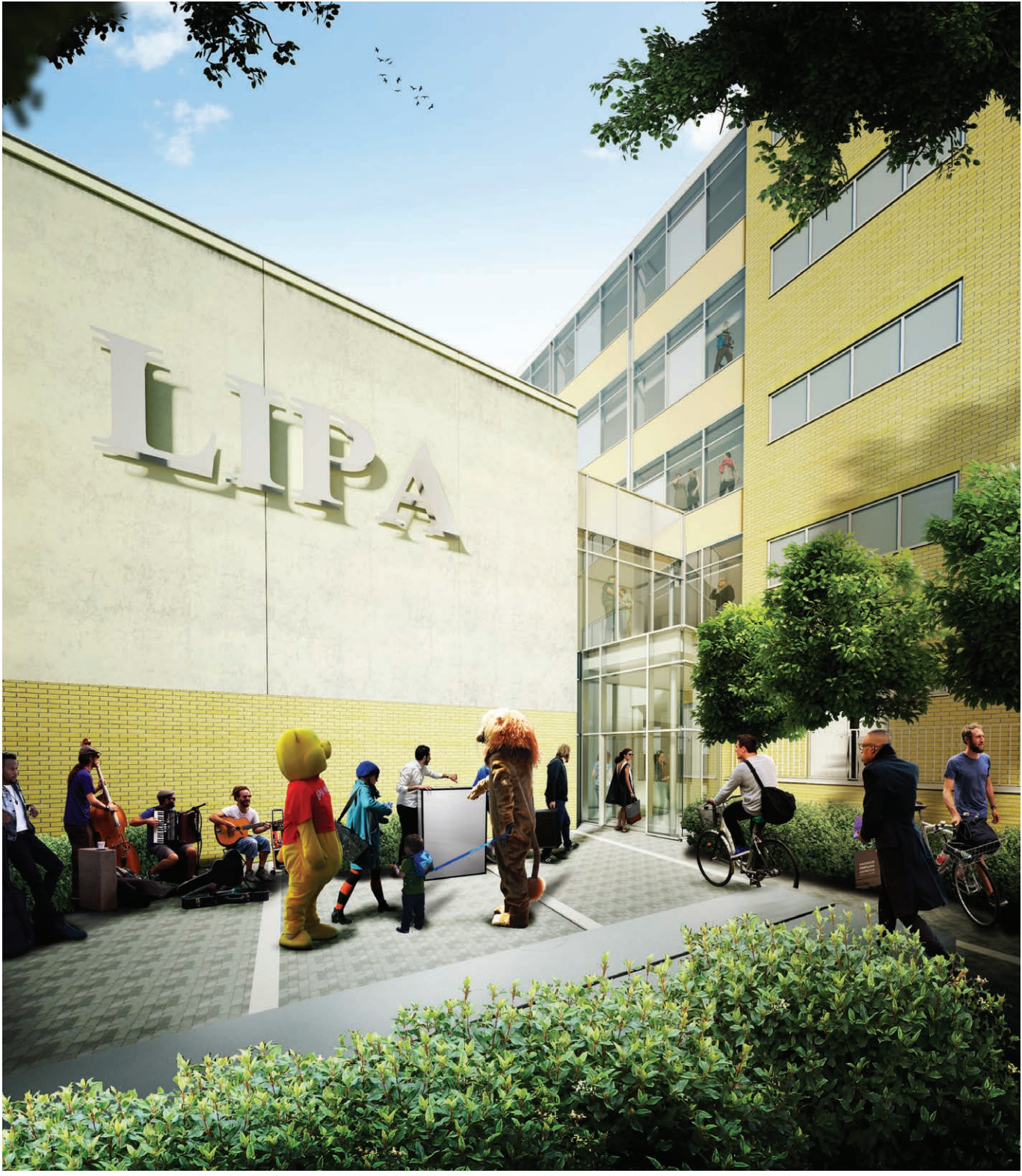
THE LIVERPOOL INSTITUTE
FOR PERFORMING ARTS



OUR BUILDING

In addition to the obvious benefits of our position within LIPA's campus, you will also have your own space to develop your skills and interests. LIPA Sixth Form College is a self-contained building, which has been redeveloped to create a purpose-built specialist post-16 learning environment.

We offer modern facilities and equipment within the splendid creative and dynamic environment of Liverpool's Cultural Quarter, as illustrated in the artist's impressions below.



Artist's impression of LIPA Sixth Form College exterior



OUR BUILDING



Artist's impression of LIPA Sixth Form College foyer

? I still have questions

Contact the LIPA Sixth Form College Administrator

0151 330 3232

enquiries@lipasixthformcollege.org

Disclaimer At the time of printing, course information is still subject to confirmation, and while every effort has been made to ensure it is accurate, it does not form any contract between LIPA Sixth Form College and any individual. In addition, LIPA Sixth Form College reserves the right to make changes and cannot accept liability arising out of or in connection with, any such revision.

OUR FACILITIES

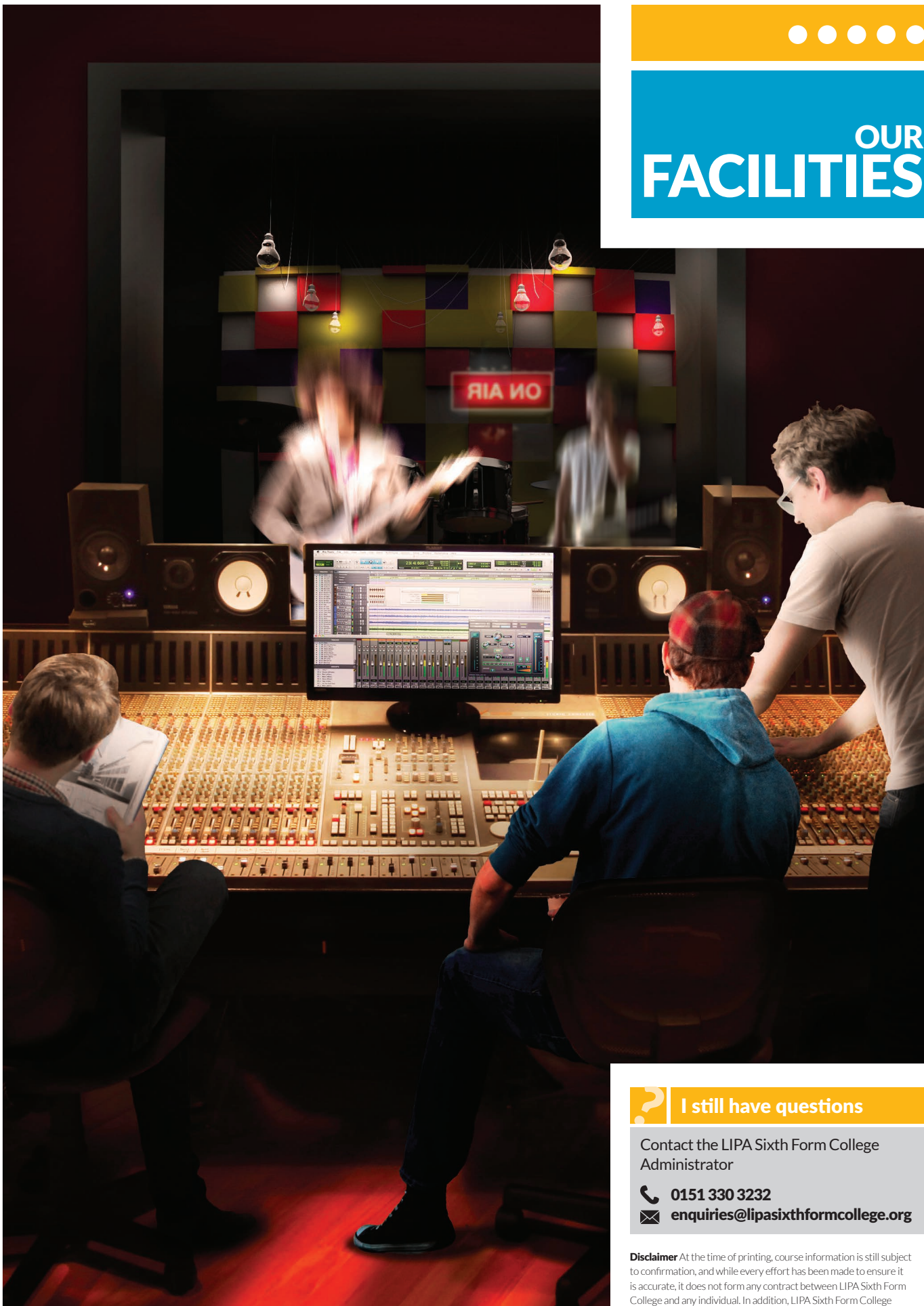
The refurbishment of the LIPA Sixth Form College building enables us to offer new self-contained specialist facilities, including:

- Studio theatre
- Dance and acting studios
- Recording studio
- Sound technology suite
- Music rehearsal rooms
- Student break-out zone
- Scenic design and construction workshop
- Tutorial rooms and classrooms
- Learning resource centre
- Café



Artist's impression of LIPA Sixth Form College studio theatre

OUR FACILITIES



Artist's impression of LIPA Sixth Form College recording studio

I still have questions

Contact the LIPA Sixth Form College Administrator

0151 330 3232

enquiries@lipasixthformcollege.org

Disclaimer At the time of printing, course information is still subject to confirmation, and while every effort has been made to ensure it is accurate, it does not form any contract between LIPA Sixth Form College and any individual. In addition, LIPA Sixth Form College reserves the right to make changes and cannot accept liability arising out of or in connection with, any such revision.

OVERVIEW
OF OUR
COURSES

BTEC Level 3 Extended Diplomas are practical qualifications, each equivalent to three A-Levels, and are designed to meet the demands of the creative and performing arts economy - whether your interest is in performing, working creatively (such as in set design) or in technical production.

Successful completion of one of these courses will equip you with the skills, knowledge and understanding to progress to studying your chosen discipline within a Higher Education setting, or to go straight into work.

You are continually assessed throughout the courses, with regular feedback and homework. Predominantly practical in focus, the courses also help you to improve your skills in critical analysis and self-directed study, developing your professional profile for what happens next.

The depth, breadth and challenge of the curriculum for each BTEC Level 3 Extended Diploma is intense, and it is for this reason that we have decided not to offer additional qualifications (such as A-Levels).

I still have questions

Contact the LIPA Sixth Form College Administrator

0151 330 3232

enquiries@lipasixthformcollege.org

All LIPA Sixth Form College students follow a two-year BTEC Level 3 Extended Diploma programme in a creative or performing arts discipline of their choice from the subjects listed below.

Each course balances theory and practice in an exciting, engaging and inspirational way. You will have the chance to explore and develop your interests and abilities as you apply your creativity and ambition to a wide range of realistic, practical project-based learning opportunities.



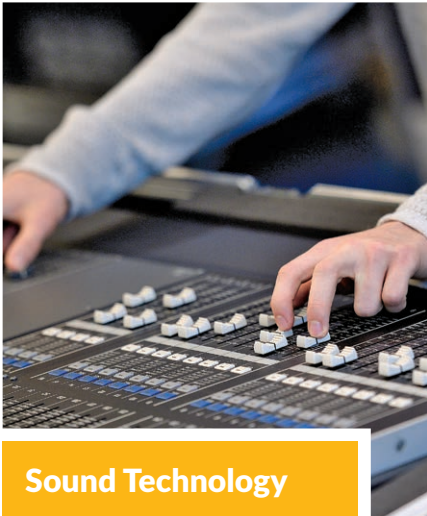
Acting



Dance



Music



Sound Technology



Design for Performance



Technical Theatre

GENERAL
COURSE
QUESTIONS



- What does the BTEC Level 3 Extended Diploma cost?**
- There are no fees to study at LIPA Sixth Form College, but there may be costs attached to certain additional opportunities (such as 1:1 music lessons) – information will be provided as part of the enrolment process.
- Do I need to purchase any equipment?**
- A full list of any equipment or clothing required will be provided as part of the enrolment process. Costs for these are kept as low as possible. All students will be asked to buy a branded LIPA Sixth Form College hoodie and t-shirt, and certain courses (such as Dance, Design for Performance and Technical Theatre) may require additional course-related equipment or clothing. Depending on funding, we may be able to assist some students in certain circumstances with these costs.
- How much will I have to study each week?**
- The BTEC Level 3 Extended Diploma is studied full-time across the teaching year, with the college day running 9am-4.30pm. Your studies will include timetabled hours for classes and workshops across the week (equating to three days per week), and you will also be expected to undertake independent study and practice to work towards achieving your study goals. In the lead up to performances, you are likely to need to work outside the usual study day – in these instances, advance notice will be given. There will also be a programme of work experience and enrichment opportunities for all students, and we will be developing a range of extra-curricular activities, tailored to match the interests of our students across all subject areas.

GCSE Maths and English Language

September 2017 entry to all our BTEC Level 3 Extended Diploma courses will require a predicted minimum of five GCSEs at grade A* to C, ideally including Maths and English. If you fail to gain a grade C or above in Maths and/or English Language, we will support you to retake these subjects alongside your BTEC Level 3 Extended Diploma studies. However, as retaking these GCSEs will be an additional demand on your time, it is in your interest to work to pass them the first time round. All students, regardless of GCSE attainment, will be expected to make further progress in their communication and mathematical skills. Opportunities to do this will be embedded in course assignment tasks, as well as in work experience and other activities.

I still have questions

Contact the LIPA Sixth Form College Administrator

0151 330 3232

enquiries@lipasixthformcollege.org

Disclaimer While every effort has been made to ensure that the information contained in this prospectus is accurate at the time of printing, it does not form any contract between LIPA Sixth Form College and any individual. In addition, LIPA Sixth Form College reserves the right to make changes and cannot accept liability arising out of, or in connection with, any such revision.

ACTING

What will I be doing?

In addition to plenty of performance opportunities, you will also learn about and develop your skills in areas such as directing, writing and producing. You will study a wide range of acting and performance styles (suited both for stage and for other performance-based media), but will still have the opportunity to specialise in the areas which interest you most. Our project-based learning approach enables you to develop your skills through workshops, assignments and projects and you will work alongside students of other disciplines to put on a series of performances (across a range of styles) during the teaching year.

In addition, you will benefit from the support and guidance of our creative and performing arts industry-experienced teaching staff, contact with external industry professionals through masterclasses, workshops and visits, a minimum of one week's work experience each year, opportunities to work with the wider creative and performing arts community within Liverpool and beyond, and, of course, access to our new facilities.



What could I do next?

You will be equipped to apply for Higher Education or to seek work in the creative and performing arts economy. Related career paths might include acting (stage, TV, radio or film), directing, producing, writing or performing arts management.

How do I apply?

You must complete an application form for September 2017 entry and submit it to us no later than 31 January 2017. If your application is successful at this initial stage of the admissions process, you will be called for an interview and audition. These will take place in February and March 2017, and you will be given at least four weeks' notice and full guidance as to how to prepare. Offers of places (usually conditional on achieving a minimum of five GCSEs at grades A*-C) will be sent out by 10 April 2017.

? I still have questions

Contact Steph White,
Programme Manager, Acting

☎ 0151 330 3232
✉ enquiries@lipasixthformcollege.org

Disclaimer While every effort has been made to ensure that the information contained in this prospectus is accurate at the time of printing, it does not form any contract between LIPA Sixth Form College and any individual. In addition, LIPA Sixth Form College reserves the right to make changes and cannot accept liability arising out of, or in connection with, any such revision.

What will I leave with?

Successful completion of this two-year course will earn you the BTEC Level 3 Extended Diploma in Acting. Equivalent to three A-Levels, this nationally-recognised qualification is suitable for progression onto Higher Education. You will also leave with enhanced interpersonal, critical and decision-making abilities, which will serve you well in future life.

DANCE

Whatever your favourite dance style – ballet, jazz, tap or contemporary – your skills and technical ability will benefit from this course, which is ideal for anyone considering a dance-focused career. Developing your understanding of a wide range of dance disciplines, styles and approaches, you will gain an insight into the range of career paths available, and enjoy opportunities to enhance your learning experience by working with industry professionals.

What will I be doing?

Following a course that covers many styles of dance – some familiar, some new – you will develop your technical ability alongside choreography, improvisation and performance skills. The regular workshops and assignments of our project-based learning approach will allow you to specialise in the areas which interest you most, such as contemporary, jazz, ballet, fusion and urban, while trying new things as you work alongside students of other disciplines to put on a series of performances (across a range of styles) during the teaching year.

In addition, you will benefit from the support and guidance of our creative and performing arts industry-experienced teaching staff, contact with external industry professionals through masterclasses, workshops and visits, a minimum of one week's work experience each year, opportunities to work with the wider creative and performing arts community within Liverpool and beyond, and, of course, access to our new facilities.



What could I do next?

You will be equipped to apply for Higher Education or to seek work in the creative and performing arts economy. Related career paths might include performing on stage, in music videos, as a backing dancer, or as a choreographer.

How do I apply?

You must complete an application form for September 2017 entry and submit it to us no later than 31 January 2017. If your application is successful at this initial stage of the admissions process, you will be called for an interview and audition. These will take place in February and March 2017, and you will be given at least four weeks' notice and full guidance as to how to prepare. Offers of places (usually conditional on achieving a minimum of five GCSEs at grades A*-C) will be sent out by 10 April 2017.

? I still have questions

Contact Andrea McDevitt,
Programme Manager, Dance

☎ 0151 330 3232
✉ enquiries@lipasixthformcollege.org

Disclaimer While every effort has been made to ensure that the information contained in this prospectus is accurate at the time of printing, it does not form any contract between LIPA Sixth Form College and any individual. In addition, LIPA Sixth Form College reserves the right to make changes and cannot accept liability arising out of, or in connection with, any such revision.

What will I leave with?

Successful completion of this two-year course will earn you the BTEC Level 3 Extended Diploma in Dance. Equivalent to three A-Levels, this nationally-recognised qualification is suitable for progression onto Higher Education. You will also leave with enhanced interpersonal, critical and decision-making abilities, which will serve you well in future life.



MUSIC

If you live and breathe music, this is the course for you. Broadening your understanding of a wide range of performance styles, composition, recording and live sound, you will gain an insight into the range of career paths available and enjoy opportunities to enhance your learning experience by working with industry professionals.

What will I be doing?

You will learn to compose and arrange music involving a range of instruments (including voice), and be encouraged to develop your own style of performance. You will also gain practical experience of new styles of performance alongside those areas which interest you most, ranging from composing, songwriting, music theory and modern music practice. Our project-based learning approach enables you to develop your music skills through workshops, assignments and projects, while working alongside students of other disciplines to put on a series of performances (across a range of styles) during the teaching year.

In addition, you will benefit from the support and guidance of our creative and performing arts industry-experienced teaching staff, contact with external industry professionals through masterclasses, workshops and visits, a minimum of one week's work experience each year, opportunities to work with the wider creative and performing arts community within Liverpool and beyond, and, of course, access to our new facilities.



What could I do next?

You will be equipped to apply for Higher Education or to seek work in the music industry. Related career paths might include performing as a solo artist, within a group or as a session musician, composing/song writing or production.

How do I apply?

You must complete an application form for September 2017 entry and submit it to us no later than 31 January 2017. If your application is successful at this initial stage of the admissions process, you will be called for an interview and audition. These will take place in February and March 2017, and you will be given at least four weeks' notice and full guidance as to how to prepare. Offers of places (usually conditional on achieving a minimum of five GCSEs at grades A*-C) will be sent out by 10 April 2017.

? I still have questions

Contact Nadeen Kemp,
Programme Manager, Music

0151 330 3232
enquiries@lipasixthformcollege.org

Disclaimer While every effort has been made to ensure that the information contained in this prospectus is accurate at the time of printing, it does not form any contract between LIPA Sixth Form College and any individual. In addition, LIPA Sixth Form College reserves the right to make changes and cannot accept liability arising out of, or in connection with, any such revision.

What will I leave with?

Successful completion of this two-year course will earn you the BTEC Level 3 Extended Diploma in Music. Equivalent to three A-Levels, this nationally-recognised qualification is suitable for progression onto Higher Education. You will also leave with enhanced interpersonal, critical and decision-making abilities, which will serve you well in future life.

SOUND TECHNOLOGY

If you know your synthesizers from your samplers, this course is for you. Developing your understanding of a wide range of sound technology applications, practical skills and sound recording, you will gain an insight into the range of career paths available, and enjoy opportunities to enhance your learning experience by working with industry professionals.

What will I be doing?

Whether you want to get your hands on recording equipment and software, or you're more interested in recording techniques, this course allows you to specialise in the areas and styles which interest you most, in addition to developing new techniques and skills. Working alongside students of other disciplines to put on performances and creating your own projects, our workshops and assignments will help you to improve and expand your technical abilities and interests both inside and outside the recording studio.

In addition, you will benefit from the support and guidance of our creative and performing arts industry-experienced teaching staff, contact with external industry professionals through masterclasses, workshops and visits, a minimum of one week's work experience each year, opportunities to work with the wider creative and performing arts community within Liverpool and beyond, and, of course, access to our new facilities.



What will I leave with?

Successful completion of this two-year course will earn you the BTEC Level 3 Extended Diploma in Sound Technology. Equivalent to three A-Levels, this nationally-recognised qualification is suitable for progression onto Higher Education. You will also leave with enhanced interpersonal, critical and decision-making abilities, which will serve you well in future life.



What could I do next?

Successful completion of this course will equip you to apply for Higher Education or to seek work in the music industry. Related career paths might include live sound, recording studio engineering and production and audio work.

How do I apply?

You must complete an application form for September 2017 entry and submit it to us no later than 31 January 2017. If your application is successful at this initial stage of the admissions process, you will be called for an interview and audition. These will take place in February and March 2017, and you will be given at least four weeks' notice and full guidance as to how to prepare. Offers of places (usually conditional on achieving a minimum of five GCSEs at grades A*-C) will be sent out by 10 April 2017.

? I still have questions

Contact Nadeen Kemp,
Programme Manager, Sound Technology

0151 330 3232
enquiries@lipasixthformcollege.org

Disclaimer While every effort has been made to ensure that the information contained in this prospectus is accurate at the time of printing, it does not form any contract between LIPA Sixth Form College and any individual. In addition, LIPA Sixth Form College reserves the right to make changes and cannot accept liability arising out of, or in connection with, any such revision.

DESIGN FOR PERFORMANCE

What will I be doing?

Working with students of other disciplines, you will provide the design elements for performances, which may include (among others) set design, scenery construction, lighting, costumes and props. The workshops and assignments offered by our project-based learning approach will enable you to try different techniques and approaches within a wide range of production arts contexts to develop your design skills.

In addition, you will benefit from the support and guidance of our creative and performing arts industry-experienced teaching staff, contact with external industry professionals through masterclasses, workshops and visits, a minimum of one week's work experience each year, opportunities to work with the wider creative and performing arts community within Liverpool and beyond, and, of course, access to our new facilities.



What could I do next?

You will be equipped to apply for Higher Education or to seek work in the creative and performing arts industry. Related career paths might include set or costume design, lighting, prop making, or production design.

How do I apply?

You must complete an application form for September 2017 entry and submit it to us no later than 31 January 2017. If your application is successful at this initial stage of the admissions process, you will be called for an interview and audition. These will take place in February and March 2017, and you will be given at least four weeks' notice and full guidance as to how to prepare. Offers of places (usually conditional on achieving a minimum of five GCSEs at grades A*-C) will be sent out by 10 April 2017.

? I still have questions

Contact Steph White,
Programme Manager, Production Arts

☎ 0151 330 3232
✉ enquiries@lipasixthformcollege.org

Disclaimer While every effort has been made to ensure that the information contained in this prospectus is accurate at the time of printing, it does not form any contract between LIPA Sixth Form College and any individual. In addition, LIPA Sixth Form College reserves the right to make changes and cannot accept liability arising out of, or in connection with, any such revision.

What will I leave with?

Successful completion of this two-year course will earn you the BTEC Level 3 Extended Diploma in Production Arts. Equivalent to three A-Levels, this nationally-recognised qualification is suitable for progression onto Higher Education. You will also leave with enhanced interpersonal, critical and decision-making abilities, which will serve you well in future life.

TECHNICAL THEATRE

For a full and in-depth introduction to the skills and knowledge needed to run a performance, this qualification will appeal to anyone interested in the technical side of the creative and performing arts economy. Broadening your understanding of technical production skills across the board, you will gain an insight into the range of career paths available and enjoy opportunities to enhance your learning experience by working with industry professionals.

What will I be doing?

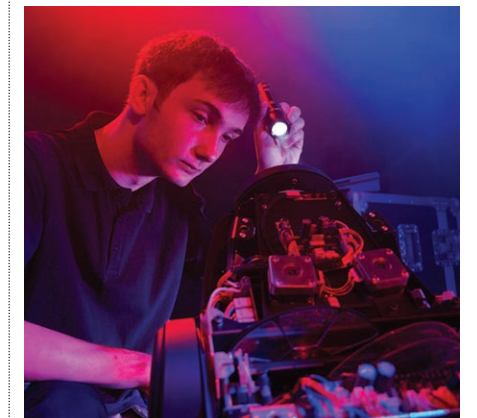
The technical requirements of performance production are diverse, so you will benefit from solid, project-based learning through a wide range of activities across areas such as lighting, live sound, stage management, and scenic construction. Our performance-driven focus will give you a real, practical opportunity to develop your technical skills through workshops, assignments and projects, while working alongside students of other disciplines.

In addition, you will benefit from the support and guidance of our creative and performing arts industry-experienced teaching staff, contact with external industry professionals through masterclasses, workshops and visits, a minimum of one week's work experience each year, opportunities to work with the wider creative and performing arts community within Liverpool and beyond, and, of course, access to our new facilities.



What will I leave with?

Successful completion of this two-year course will earn you the BTEC Level 3 Extended Diploma in Production Arts. Equivalent to three A-Levels, this nationally-recognised qualification is suitable for progression onto Higher Education. You will also leave with enhanced interpersonal, critical and decision-making abilities, which will serve you well in future life.



What could I do next?

Successful completion of this course will enable you to apply for Higher Education or to seek work in the creative and performing arts economy. Related career paths might include set construction, stage management, sound, lighting or production design.

How do I apply?

You must complete an application form for September 2017 entry and submit it to us no later than 31 January 2017. If your application is successful at this initial stage of the admissions process, you will be called for an interview and audition. These will take place in February and March 2017, and you will be given at least four weeks' notice and full guidance as to how to prepare. Offers of places (usually conditional on achieving a minimum of five GCSEs at grades A*-C) will be sent out by 10 April 2017.

? I still have questions

Contact Steph White,
Programme Manager, Production Arts

☎ 0151 330 3232
✉ enquiries@lipasixthformcollege.org

Disclaimer While every effort has been made to ensure that the information contained in this prospectus is accurate at the time of printing, it does not form any contract between LIPA Sixth Form College and any individual. In addition, LIPA Sixth Form College reserves the right to make changes and cannot accept liability arising out of, or in connection with, any such revision.

STUDENT
SUPPORT

You will benefit from a range of support as you progress. This will come from your tutors, from your learning coaches (who can help you access support for a range of needs, whether learning, practical, social or emotional) and from industry contacts, with whom you might work.

In addition, if you have SEN or disabilities, you will have support from a dedicated Learning Support Coordinator. Your own personalised learning plan will help you to identify the best way our staff can work with you to achieve your ambitions and regular feedback – both informal and formal, through Parents' Evenings and written progress reports – will help you to stay on track.

Careers and
university advice

In addition to ongoing advice and support from tutors and industry professionals, we will also offer you a formal 'Looking Forward' programme, our own course dedicated to university choices, UCAS applications, work placements, job opportunities and internships. With regular events planned from January 2018 onwards, information will be available to you and your parents / carers / guardians on grants, loans and fees to support further study and on taking the first steps into work.

Student voice

When you enrol, you will receive more information on how to join our elected Student Board, who will be actively involved in decision-making and will bring a student perspective to the overall organisation.

Learning coaches

When you join us, you will be assigned a Learning Coach, who will be your main contact for your day-to-day needs. You will meet with your Learning Coach and a small group of other students on a regular basis, but you will also benefit from regular individual tutorials, during which you can discuss your learning progress and other issues. Your Learning Coach will receive regular feedback from your discipline teachers and will also monitor your attendance.

Tutors and industry contacts

Your tutors and industry professionals will also be important contacts and sources of support and guidance during your time with us. Providing you with regular feedback on your progress, they will teach and guide you towards achieving the professional goals you identify and will also provide information about careers and degree courses.

STUDENT
SUPPORT**Assessment and reporting**

Your course progress will be continually assessed throughout the two years of your BTEC Level 3 Extended Diploma. Our communication with your parents/carers/guardians will be important to help you progress not only in your studies, but also as you develop as a young adult, becoming increasingly self-reliant, independent and motivated. Shortly after you begin your studies with us in September 2017, we will hold an Information Evening for your parents/carers/guardians. In addition to termly progress reports, there will be a full written report in Years 12 and 13. We will also hold Parents' Evenings in both years. You will be expected to attend with your parents/carers/guardians.

Students with Special Educational Needs and/or disabilities

We welcome applications from everyone with a passion for the creative and performing arts – if you have particular educational needs and/or a disability, you may wish to have an informal, confidential, discussion with Amy Deane, our Inclusion Manager, before submitting your application – please telephone 0151 330 3232 or email enquiries@lipasixthformcollege.org in the first instance.

A dedicated Learning Support Coordinator will be available to support you across a wide range of student needs – personal, academic, social, emotional, health and/or welfare related - and can be contacted any time after you have received your offer of a place to join us in September 2017. Any support requested will be in complete confidence – please contact us at enquiries@lipasixthformcollege.org in the first instance.

Enrichment programme

You will enjoy a wide range of opportunities to enrich your learning and professional development beyond your study programme. You will have the chance to:

- Contribute to the production of performances on various scales, such as internal performances or at an external performing arts venue or event
- Participate in masterclasses, seminars and workshops led by leading professionals who may also provide extended teaching for performance projects. This might involve you taking direction from a commercial dance choreographer or a West End director, for example
- Engage in community arts productions and be involved with the wider community as an integral part of our activities
- Attend performances at LIPA and at other creative and performing venues across Liverpool

Experience
of work

In addition to your studies, you will also be offered at least one week of work experience each year, in which placements will be arranged to complement areas related to your studies and/or career ambitions. These opportunities will give you valuable experience across a range of activities both within and outside your chosen discipline. We will also provide ongoing information and support to help you decide what to do when you leave us.

? I still have questions

Contact Amy Deane, Inclusion Manager

☎ 0151 330 3232
✉ enquiries@lipasixthformcollege.org

Disclaimer While every effort has been made to ensure that the information contained in this prospectus is accurate at the time of printing, it does not form any contract between LIPA Sixth Form College and any individual. In addition, LIPA Sixth Form College reserves the right to make changes and cannot accept liability arising out of, or in connection with, any such revision.

WHAT ARE WE LOOKING FOR?

Minimum GCSE requirements

September 2017 entry to all our BTEC Level 3 Extended Diploma courses will require a predicted minimum of five GCSEs at grade A* to C, ideally including Maths and English. If you fail to gain a grade C or above in Maths and/or English Language, we will support you to retake these subjects alongside your BTEC Level 3 Extended Diploma studies. However, as retaking these GCSEs will be an additional demand on your time, it is in your interest to work to pass them the first time round.

All students, regardless of GCSE attainment, will be expected to make further progress in their communication and mathematical skills. Opportunities to do this will be embedded in course assignment tasks, as well as in work experience and other activities.

I still have questions

Contact the LIPA Sixth Form College Administrator

0151 330 3232
enquiries@lipasixthformcollege.org

Disclaimer While every effort has been made to ensure that the information contained in this prospectus is accurate at the time of printing, it does not form any contract between LIPA Sixth Form College and any individual. In addition, LIPA Sixth Form College reserves the right to make changes and cannot accept liability arising out of, or in connection with, any such revision.

Put simply, you can't imagine doing anything other than what you love, and, potentially, going on to make a living from it – whether that means acting, dancing, playing an instrument or performing in a band, or making performance possible, through music production, set or costume design, lighting, sound design or stage management.

There is as much variety in our student body as there are opportunities within the creative and performing arts. But don't worry – you don't necessarily need to know exactly what you want to be or do in the future. What matters is that you are dedicated and committed to working hard and can show us that you have the aptitude to succeed.

You may have noticed in the course outlines that we have not asked for any specific creative and/or performing arts subjects to have been studied at GCSE. This is deliberate. We know that you may not have had the same opportunities as someone else – perhaps your school doesn't offer Dance at GCSE, the only drama group is too far away or too expensive or you can't afford the latest software that would make your recordings sound even better.

We don't feel that a lack of previous opportunity should prevent applicants to LIPA Sixth Form College with real potential – even in its rawest form – from accessing and benefiting from our industry-experienced learning.

This belief is reflected in our approach to applications.



ATTRIBUTES

Your natural ability, your fit with what and how we teach, your commitment to personal and discipline-related development and your potential are key factors in our admissions process. We can't evaluate these based solely on your predicted grades at GCSE, so we also look for other ways to confirm your suitability for our courses.

In order to assess your commitment and potential, we have identified six attributes we feel you need to give yourself the best chance of success with us:



Knowledge, ability and experience in your discipline

We would like you to have some experience in your discipline, gained either through opportunities at school or in your spare time. Good examples of this may be through your involvement in school productions (either performing or backstage), through youth theatre, school choir or orchestra, or through developing your own interests in design or technology. Your course is likely to cover a range of creative and performing approaches within your chosen discipline, so you need to be willing to have a go at everything.



Self-awareness

We would like to know why you are applying to us - how do you think your course will help you to grow, and what can you bring to your studies? What are you good at, and what would you like to be able to do better, or more of? As we begin to get to know you better, we can help you begin to work more effectively towards your further study and/or career aspirations.



A spirit of enterprise

We want you to be able to work on your own initiative and see that you are interested in creating your own opportunities. Even if you haven't had much opportunity to be involved with projects that were not part of your regular school/college curriculum, your ideas and enthusiasm will go a long way.



Ability to work effectively with others

We would like you to be able to work well with others. While you are with us, you will work with a wide range of people – teachers, industry professionals and other students. We would like to see that you are open to learning from other people, that you can listen to them and see their point of view (even if it's not the same as yours) and that you can offer constructive feedback.



Commitment to your discipline

We would like to see that you have begun to develop your interest for your discipline by doing more than just looking for creative and/or performing opportunities either at school or in your spare time. While distance or cost may have stopped you from gaining formal experience, signs that you read about the subject, make efforts to see other people active within the discipline you wish to study and can talk with enthusiasm about your subject will support your application.



Broad interest and engagement

We would like to see that you are curious about the world around you, that you are keen to share your experience and learn from the experience of others and that you are willing to get involved with the wide range of opportunities we offer.

I still have questions

Contact the LIPA Sixth Form College Administrator

0151 330 3232
enquiries@lipasixthformcollege.org

FREQUENTLY ASKED QUESTIONS

Hopefully, any questions you may have will have been answered already, but if not, here are some of the most frequently asked questions. If your question isn't here, please get in touch at enquiries@lipasixthformcollege.org

Will you accept students from 14+, like The BRIT School?

No. You need to be 16 when you join us (and no older than 18 on completing your course) and looking to study creative or performing arts' subjects at Level 3. In most cases, students will join us straight from Year 11, and will enter the first year of our two-year BTEC Level 3 Extended Diploma courses, which is the equivalent of Year 12.

Is it possible to take a year out or defer my place?

Unfortunately not. As a Sixth Form College (and due to how we are funded), you need to be 16/completing Year 11 to join us and not more than 18 by the time you complete your studies. Due to the number of applications we receive, we ask that your application to study here is made in the year you wish to join us - i.e., not later than 31 January 2017 for September 2017 entry, or 31 January 2018 for September 2018 entry.

Can I join in Year 13 or transfer from elsewhere?

Given our particular approach to creative and performing arts' learning, we do not offer the opportunity for you to join us in Year 13, as we feel that to truly benefit from your time with us, you need to complete both years of the course under our expert tuition. If you are already enrolled elsewhere, you can make an application to join our Year 12 intake, but please be aware that our priority for admissions is students moving up from Year 11, and that these applications will be considered ahead of yours. Once we have considered these Year 11 applications, we will then consider students wishing to transfer



from other schools/colleges - if we still have places available. Please contact the LIPA Sixth Form College Administrator for further advice.

Why are A-Levels not available?

We have decided not to offer A-Levels alongside the BTEC Level 3 Extended Diploma, due to the depth and intensity of the course curriculum and requirements, and the focus and commitment needed by students to succeed in their studies at this level. However, each BTEC Level 3 Extended Diploma qualification is equivalent to three A-Levels, and will be considered for application to Higher Education by most institutions (if you plan to progress onto a specific institution, we always recommend you check their entrance criteria in advance).

I have a disability/SEN - can I still apply?

We welcome applications from everyone with a passion for the creative and performing arts - information on the range of support we offer for students with SEN or disabilities can be found on pages 18-19. You may wish to have an informal, confidential, discussion with Amy Deane, our Inclusion Manager, before submitting your application - please telephone 0151 330 3232 or email enquiries@lipasixthformcollege.org in the first instance.

I've never had any training in my subject and/or haven't studied it for GCSE - can I still apply?

Yes - we are looking for students with the potential to succeed in their performing and creative studies with us. This means we

look at things like your natural ability, your fit with what and how we teach, and your commitment to personal and discipline-related development. These things are not necessarily demonstrated by attending weekend classes (although this is good experience) or by your GCSE choices (after all, not all schools offer all subjects). If you are passionate about what you do, and would like to develop your ability, apply to us, and we will look at how we can help you develop.

What can I do to maximise my chances of getting in?

The best thing you can do is to concentrate on your studies at school to increase your chances of meeting our minimum GCSE grade requirements. We also recommend that you get as much experience as possible - whether this is through seeing performances and creations by others, by performing or creating yourself, or by developing your critical opinions. We understand that not everyone will have been able to participate in formal extra-curricular activity, so we recommend that you do, see and find out as much as possible about the discipline you wish to study.

I don't live in Liverpool/near LIPA. Can I still apply?

Yes, however, as a local Sixth Form College, our focus needs to be on local students who can demonstrate the aptitude, motivation and dedication to benefit from our creative and performing arts-focused courses. If you live further afield, you are welcome to make an application to join us (subject to you meeting the entry criteria set out in the Admissions Policy), but please note that we do not offer any residential accommodation for students. In addition, any bursaries, grants and other funding for travel and living costs

FREQUENTLY ASKED QUESTIONS



will be limited (and subject to means-testing). Please contact the LIPA Sixth Form College Administrator for more information on this. We regret that, due to the nature of our funding, we are unable to accept applications from students who do not live in mainland UK (including the Channel Islands and Isle of Man).

Can you help me to find accommodation if I need it?

If you don't live locally - or within easy travelling distance - you may be considering finding accommodation in Liverpool during term-time. The city has a wide range of accommodation opportunities available for students, and you may find the accommodation office at each of Liverpool's universities a good starting point. However, please note that LIPA Sixth Form College is unable to recommend any individual accommodation provider, and cannot accept any responsibility for any accommodation arrangements you or your parents/carers/guardians might make.

How much will it cost to study at LIPA Sixth Form College?

There are no fees to study at LIPA Sixth Form College, but there may be costs attached

to certain additional opportunities (such as 1:1 music lessons) - information will be provided as part of the enrolment process. In addition, a full list of any equipment or clothing required will be provided as part of the enrolment process. Costs for these are kept as low as possible. All students will be asked to buy a branded LIPA Sixth Form College hoodie and t-shirt, and certain courses (such as Dance and Production Arts) may require additional course-related equipment or clothing. Depending on funding, we may be able to assist some students in certain circumstances with these costs. Please contact the LIPA Sixth Form College Administrator for more information on this.

How much will I have to study each week?

The BTEC Level 3 Extended Diploma is studied full-time across the teaching year, with the college day running 9am-4.30pm. Your studies will include timetabled hours for classes and workshops across the week (equating to three days per week), and you will also be expected to undertake independent study and practice to work towards achieving your study goals. In the lead up to performances, you are likely to need to work outside the usual study day - in these instances, advance notice will be given.

Can I do any extra-curricular activities?

Alongside work experience and enrichment opportunities, a programme of extra-curricular activities is available, and will be tailored to match the interests of our students across all subject areas.

Does studying with you fast-track me into LIPA for HE?

No. To get onto one of LIPA's Foundation Certificate or degree programmes, you will still need to apply through UCAS, alongside applicants from other schools, Sixth Forms and Further Education colleges. However, studying with us will undoubtedly increase the range of future opportunities available to you when you leave us.

I still have questions

Contact the LIPA Sixth Form College Administrator
 ☎ 0151 330 3232
 ✉ enquiries@lipasixthformcollege.org

Disclaimer While every effort has been made to ensure that the information contained in this prospectus is accurate at the time of printing, it does not form any contract between LIPA Sixth Form College and any individual. In addition, LIPA Sixth Form College reserves the right to make changes and cannot accept liability arising out of, or in connection with, any such revision.

HOW TO APPLY



Advice on applying

- ✓ **Don't rush** – although the forms are available from 1st September 2016, you will have plenty of time before the 31st January 2017 deadline to write your application.
- ✓ **Think** – before completing the application form, talk to friends, parents and teachers, and think about why you want to study with us: what can you give us and what can we give you?
- ✓ **What makes you different?** – although you may always have wanted to be a singer, dancer, musician or creative, saying so won't necessarily make your application stand out. Think about what makes you different – your inspirations, your influences, your ambitions: these are just as important as your experience in helping us make our decisions.

I still have questions

Contact the LIPA Sixth Form College Administrator

0151 330 3232

enquiries@lipasixthformcollege.org

Disclaimer While every effort has been made to ensure that the information contained in this prospectus is accurate at the time of printing, it does not form any contract between LIPA Sixth Form College and any individual. In addition, LIPA Sixth Form College reserves the right to make changes and cannot accept liability arising out of, or in connection with, any such revision.

For September 2017 entry, we will have 180 places available for the first year of our two-year BTEC Level 3 Extended Diplomas. As a local Sixth Form College, most of our students are likely to come from Liverpool and the wider Merseyside area. If you live further afield, you are welcome to make an application, but as we do not offer any residential accommodation for students, you will need to make your own travel and/or living arrangements.

We welcome applications from everyone with a passion for the creative and performing arts – information on the range of support we offer for students with SEN or disabilities can be found on pages 18-19. You may wish to have an informal, confidential, discussion with Amy Deane, our Inclusion Manager, before submitting your application – please telephone 0151 330 3232 or email enquiries@lipasixthformcollege.org in the first instance.

Making your application

Application form

The first step in applying is to complete an application form, which you can get from www.lipasixthformcollege.org, or from the LIPA Sixth Form College Administrator, and which is supported by guidance notes to help you complete it.

In order to successfully move onto the second stage of the applications process – an interview and audition/submission of portfolio of work relevant to the chosen discipline you wish to study – you will need to be predicted by your school to achieve at least 5 GCSEs at grade C and above. Your school will also need to provide us with your Year 10 report.

In addition to general information about you, your education and ambitions, the application form will ask you to answer a number of questions related to the discipline you wish to study. This is designed to give you the chance to give details of any relevant practical experience you have (don't worry if you don't have any!) and to explain why you feel the course you have chosen is right for you (and vice versa).

Stage 1

Interview and audition/ submission of portfolio

Based on the information on your application form, and your Year 10 report, you may be invited to attend an interview and audition or – in the case of Sound Technology, Design for Performance and Technical Theatre – to submit a portfolio of work relevant to your chosen course. These will take place during February/March 2017, and we will give you at least four weeks' notice and guidelines to help you prepare.

If you are successful at your interview and audition/submission, you will be sent a letter offering you a place for September 2017 entry by 10th April. Depending on your circumstances, this may be a conditional or an unconditional offer.

Stage 2

Results and confirmation of your place for September 2017 entry

If you have a conditional offer, your place will be confirmed in August if your GCSE results match or exceed your predicted grades. (If you fail to achieve a minimum of Grade C in English Language and/or Maths, we will support you to retake these subjects alongside your BTEC Level 3 Extended Diploma studies). You'll then be able to enrol with us, and we'll provide you with all the information you need ready for the start of term in September.

Stage 3



Applications calendar for September 2017 entry

If you like what you've read, and feel that we could be the right choice for you, then we'd like to hear from you. The timescale for applying to us is:

September 2016



1st September – application period opens for September 2017 entry

Application forms, together with guidance on how to complete them, will be available on our website, www.lipasixthformcollege.org, or by contacting the LIPA Sixth Form College Administrator.

January 2017



31st January – closing date for applications for September 2017 entry

Please note that applications received after this date may not be considered.

February & March 2017



Interviews and auditions

Invitations to interviews and auditions will be sent out (along with guidelines on how best to prepare) with a minimum of four weeks' notice. All interviews and auditions will be held at LIPA Sixth Form College or nearby.

April 2017



10th April – offers sent out for September 2017 entry

On receipt of an offer (whether conditional or unconditional), you must accept or reject it by the date specified in the letter, otherwise you will be assumed to have withdrawn from the application process, and your place will be offered to another applicant.

July 2017



Transition event for September 2017 students

All students who have been offered a place for September 2017 entry will be invited to a transition event, at which they will get to meet other students and teaching staff, sample a practical course-related activity, and get general information to help them prepare for joining us in the autumn.

August 2017



Pre-enrolment information sent out to successful applicants for September 2017 entry

These packs will contain paperwork you need to complete to enable you to enrol quickly and easily with us once your exam results are available in August and useful information (such as equipment or books you will need).

August 2017



24th/25th August – GCSE results day and enrolment

Enrolment will take place on Thursday 24th and Friday 25th August – your pre-enrolment information pack will tell you your specific enrolment appointment slot, at which you will complete all the necessary paperwork and get information relating to the start of term.

September 2017



Term starts on Monday 11th September

HOW TO APPLY



Advice on applying

- ✓ **Be organised** – make a note of relevant dates (the list opposite should help) to make sure you are well prepared to meet any deadlines in the application process – whether that is sending in your completed application form, turning up for your interview and/or audition, or completing any paperwork needed.
- ✓ **Give us time** – we will start shortlisting at the end of March, once all interviews and auditions have finished, and will let you know whether you are being offered a place for September 2017 by 10th April – please do not contact us before this date, as we will not be able to give you our decision any earlier.
- ✓ **Don't stress** – applying for Sixth Form College is a big step, but staying calm and spending some time on your application before submitting will help a lot. The same advice goes for interviews and auditions – think of it all as useful life experience.

I still have questions

Contact the LIPA Sixth Form College Administrator

0151 330 3232

enquiries@lipasixthformcollege.org

Disclaimer While every effort has been made to ensure that the information contained in this prospectus is accurate at the time of printing, it does not form any contract between LIPA Sixth Form College and any individual. In addition, LIPA Sixth Form College reserves the right to make changes and cannot accept liability arising out of, or in connection with, any such revision.

FREQUENTLY ASKED QUESTIONS

We realise that as a parent/carer/guardian, you may have your own questions about us, so please find below answers to some of the most frequently asked questions. If your question isn't here, please contact us at enquiries@lipasixthformcollege.org

How will my child benefit from studying with you?

The key benefits for our students are listed on page 2. In addition, we feel that our offer is unique because of our size, specialist focus, structure and organisation, student support and safeguarding approaches, and our special relationships with both LIPA (The Liverpool Institute for Performing Arts) and with professional contacts within the industry.

We are the only Sixth Form College in Liverpool to focus solely on Level 3 qualifications in the creative and performing arts and one of a handful of similar institutions in the UK.

Is a career in the creative and performing arts a realistic ambition?

Going on to work in the creative and performing arts economy is about far more than simply performing, and, during their time with us, our students will find out about a wide range of career options – both on-stage and behind the scenes. Taking our cue from LIPA, we (and our related industry professionals) will support our students to find out about the wide range of possible careers open to them. We are the natural first step towards entering further study or work in the creative and performing arts.



How are you different from the Sixth Form at my child's current school?

Our key point of difference from 'traditional' school Sixth Forms is the opportunity we offer for students to mix with similarly-motivated and creative and performing arts-focused peers. We feel this creates a learning environment unlikely to be experienced anywhere else. However, like 'traditional' school Sixth Forms, our ethos is to support our students as they grow and develop into young adults (as well as performers and creatives) and to provide our students with a safe, secure learning environment, where creative risks are encouraged by tutors and industry professionals experienced in their field.

Won't it be hard for my child to start at a new college?

Not at all. If anything, your child will benefit from being in a small, specialist post-16 learning environment with like-minded people who live and breathe the creative and performing arts. Working in small groups within a safe, supportive environment, and with the support and guidance of experienced tutors, your child is likely to settle in well, particularly as our practical approach to learning throws everyone in together, doing what they enjoy from day one. In addition, a range of safeguarding, anti-bullying and student support policies are in place to ensure your child flourishes on a personal level in addition to developing his/her performance, creative or technical abilities.

What does the average day look like?

The college day starts at 9am and finishes at 4.30pm, broken down into lessons of 90 minutes, and with an hour for lunch. Term dates are available on the website. Specific course-related timetables will be distributed to students in time for the beginning of term in September 2017. Please note that the study day may be extended slightly in the run-up to performances (which will take place in evenings and at weekends) – however, students will be given at least one week's notice where this is required.

As you would expect, we ask that our students ensure that their attendance levels remain high from the outset and ask that you, as a parent/carer/guardian support them to do this, by encouraging regular attendance, independent study, the completion of homework, etc, and by not arranging holidays during term-time.

Can my child still apply for university with a Level 3 Extended Diploma?

Yes - the BTEC Level 3 Extended Diploma qualification is nationally recognised as equivalent to three A-Levels, and will be considered as an alternative route for application to Higher Education by most institutions – some even prefer students who have taken a vocational route. If your child plans to progress onto a specific institution following their studies with us, we always recommend you check their

prospectus for definitive entrance criteria in advance, or speak to their Admissions team.

Does studying with you fast-track my child into LIPA for HE?

No. Studying here does not guarantee your child progression onto a degree course at LIPA and s/he will need to apply through UCAS, as do applicants from other schools, Sixth Forms and Further Education colleges. However, studying here will undoubtedly increase the range of future opportunities available to your child when s/he leaves us, and s/he may consider continuing his/her creative and performing arts studies at Higher Education level. In addition, we will be arranging for our students to attend LIPA shows and to take part in activities which will give them an invaluable insight into studying at Higher Education level at LIPA.

How will I be kept informed about my child's progress?

In addition to regular student/parent meetings, we will provide written reports on your child's progress throughout both Year 12 and 13. We will also hold Parents' Evenings, for you to discuss your child's progress with teaching staff.

An Information Evening for parents/carers/guardians will be held shortly after the beginning of term in September 2017, at which you will be able to find out more about how we can work with you to support your child's learning. If you have a query about your child's progress, his/her tutor should be your first contact for any issue. If unable to assist you, s/he will then be able to direct your enquiry to the most relevant colleague, or to the Director of Sixth Form if need be.

Who do I contact if I have a query about my child's progress?

Each student will have a named Learning Coach, who should be your first contact for any issue. If unable to assist you, s/he will then be able to direct your enquiry to the most relevant colleague, or to the Director of Sixth Form if need be.

I don't live in Liverpool/near LIPA. Can my child still apply?

Yes, however, as a local Sixth Form College, our focus needs to be on local students who can demonstrate the aptitude, motivation and dedication to benefit from our creative and performing arts-focused courses. If you live further afield, your child is welcome to make an



Disclaimer While every effort has been made to ensure that the information contained in this prospectus is accurate at the time of printing, it does not form any contract between LIPA Sixth Form College and any individual. In addition, LIPA Sixth Form College reserves the right to make changes and cannot accept liability arising out of, or in connection with, any such revision.

FREQUENTLY ASKED QUESTIONS

application to join us (subject to meeting the entry criteria set out in the Admissions Policy), but please note that we do not offer any residential accommodation for students. In addition, any bursaries, grants and other funding for travel and living costs will be limited (and subject to means-testing). Please contact the LIPA Sixth Form College Administrator for more information on this.

We regret that, due to the nature of our funding, we are unable to accept applications from students who do not live in mainland UK (including the Channel Islands and Isle of Man).

Can you help me to find accommodation for my child if needed?

If you don't live locally - or within easy travelling distance - you may be considering finding accommodation in Liverpool during term-time. The city has a wide range of accommodation opportunities available for students, and you may find the accommodation office at each of Liverpool's universities a good starting point. However, please note that LIPA Sixth Form College is unable to recommend any individual accommodation provider, and cannot accept any responsibility for any accommodation arrangements that students or parents/carers/guardians might make.

I still have questions

Contact the LIPA Sixth Form College Administrator
 0151 330 3232
enquiries@lipasixthformcollege.org



LIPA SIXTH FORM COLLEGE

Mount Street, Liverpool, L1 9HF

☎ +44 (0)151 330 3232 ✉ enquiries@lipasixthformcollege.org

🌐 www.lipasixthformcollege.org