

LIPA  
SIXTH FORM  
COLLEGE

INSPIRE  
*Create*  
PERFORM  
ACHIEVE

PRACTICAL LEARNING  
FOR THE CREATIVE AND  
PERFORMING ARTS

September Entry

WHERE  
PERFORMANCE  
MATTERS



# Welcome TO LSFC



99%

Pass rate for our  
UAL extended diplomas  
on all courses (average  
2019-21 results).



374

Students across  
years 12 and 13.



168

Is the maximum UCAS  
points available from  
our UAL extended  
diplomas (equivalent to  
distinction).



ONE

Of a handful of  
performing arts  
specialist colleges  
in England.



FIVE

Out of five areas  
judged 'outstanding'  
in our 2019 Ofsted  
inspection.



40

Members of staff  
ready to support our  
students' learning.



WHERE PERFORMANCE MATTERS



Hello  
FROM CHARLES

We are just one of a handful of further education providers in England to focus on the creative and performing arts. Rated as Outstanding in all areas by Ofsted, we are also among the country's highest rated sixth form colleges.

It may not surprise you then, that since opening in 2016 we have been oversubscribed, but please do not let this put you off from applying. When it comes to offering places, we believe talent and aptitude are what matter most. We also know that not everyone will have had the same opportunities and a significant proportion of our new students have had no formal training in their chosen subject.

It's about your potential and commitment. If you join us, we will expect you to work hard. Learning here isn't a 9-to-5 existence, in that respect it's very much like the industry. In return, you can expect our full support. We have an amazing team of staff, who demonstrate on a daily basis a passion for the performing arts, education and a commitment to supporting you to succeed.

Inspired by the Liverpool Institute for Performing Arts (LIPA) our professional focus and project-based learning prepares you for a future in the performing and creative arts. We help you develop your own independent way of learning, so you become more resilient and at the same time are learning how to work as an industry professional.

Here, you'll learn in a positive, supportive and inclusive environment alongside like-minded students and guided by industry-experienced teachers. You will be working towards a University of the Arts London (UAL) Extended Diploma and will leave us ready to take the next step, whether that be higher education or work.

Please join us.

Charles

Charles Bartholomew  
Principal of LIPA Sixth Form College

## CONTENTS

|                                |         |
|--------------------------------|---------|
| FACTS AND FIGURES              | 2       |
| WELCOME; CONTENTS              | 3       |
| OFSTED                         | 4       |
| OUR LOCATION                   | 5       |
| OUR TEACHING STAFF             | 6       |
| INDUSTRY CONNECTIONS           | 7       |
| OUR FACILITIES                 | 8 - 9   |
| STUDENT PROGRESSION            | 10 - 11 |
| STUDY PROGRAMME                | 12 - 13 |
| TECHNICAL THEATRE              | 14 - 15 |
| DESIGN FOR PERFORMANCE         | 16 - 17 |
| ACTING                         | 18 - 19 |
| DANCE                          | 20 - 21 |
| MUSIC PERFORMANCE & PRODUCTION | 22 - 23 |
| MUSICAL THEATRE                | 24 - 25 |
| STUDENT SUPPORT                | 26 - 27 |
| MONEY MATTERS                  | 28      |
| CAREERS GUIDANCE               | 29      |
| WHAT ARE WE LOOKING FOR?       | 30      |
| ATTRIBUTES                     | 31      |
| HOW TO APPLY                   | 32 - 33 |
| WHAT OUR STUDENTS SAY          | 34      |

This prospectus was printed in November 2022 and we have made every effort to ensure that the information provided (including statistics) is accurate at the date of publication. If any changes arise, we will keep them to a minimum and keep prospective students informed.

## STAY IN TOUCH!

Keep in touch and up to date with our latest news at LIPA Sixth Form College

@LIPASixthFormCo

facebook.com/lipasixthformcollege

www.lipasixthformcollege.org





In 2019, just two-and-a-half years after we opened, we achieved the best possible Ofsted, when we were rated 'outstanding' in all areas. Inspectors praised our supportive, inclusive environment; the high industry expectations modelled by our staff and the diligent and collaborative work of our students.

## KEY FINDINGS IN THE INSPECTION REPORT INCLUDED:

Staff have created an exceptionally positive and inclusive learning environment in which all students thrive and grow in confidence and ability.

Students with special educational needs and/or disabilities (SEN) develop skills in line with their peers.

Students aspire to reach exceptionally high standards in their written work and practical skills.

Students benefit from an extensive programme of additional activities. Staff use their excellent links with industry to provide students with masterclasses from an impressive range of high-profile industry professionals. Students take part in live performances, both in and outside college, and in highly competitive competitions. These help students develop an in-depth understanding of the industries in which they aspire to work.

Students strongly develop their resilience, which prepares them exceptionally well for work within the performing arts industry.

The large majority of students who complete their study programme move onto higher education courses in conservatoires, prestigious dance and drama colleges and elite universities.

Students who resit their GCSE English and mathematics improve their grades.

Students enjoy their learning and are very enthusiastic about the vocations in which they are studying. They demonstrate excellent behaviour and attitudes to work. Collaborative learning and mutual respect for each other's individuality contribute to the culture of inclusivity and the vibrancy that permeates the college.

Our Ofsted rating is the result of much hard work by our staff and students, and we look forward to sharing and building on this success with our next intake of students.



England's only UNESCO city of music, a former European City of Culture and home to an array of award-winning theatres and art galleries, Liverpool is an inspiring place to study the performing and creative arts.

It's also a city of great architecture, it has over 2,500 listed buildings, and we're located in one of its most beautiful areas, The Georgian Quarter.

Based just off Hope Street, our self-contained facilities are situated within LIPA's campus.

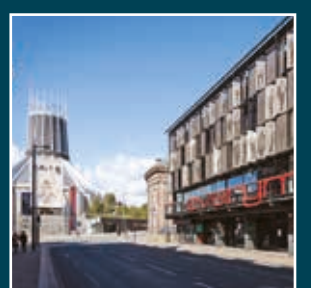
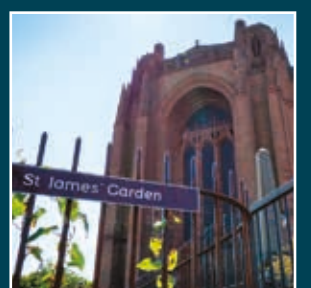
On our doorstep, we have some of Liverpool's leading venues, including LIPA itself with its cutting edge programme of theatrical productions and an annual music festival, Everyman Theatre, Royal Liverpool Philharmonic Hall and Unity Theatre.

We are a 10-minute walk away from the Baltic Triangle, home to some of the city's most exciting creative start-ups, venues and cafes.

The main shopping area, Liverpool One, is within walking distance as are the Albert Docks and Liverpool Waterfront.

If you need a moment of peace and quiet to recharge your creative batteries, St James Gardens (a Grade 1 listed park) is opposite and Falkner Square gardens and conservation feature is just 500m away.

We are easy to access by public transport and even have a City Bike station opposite our gates. Lime Street station and access to the UK rail network is also within walking distance.







# OUR TEACHING STAFF

Our teaching staff are all industry experienced. They understand, and have links to, the sector you aspire to work in. They can help you reach the standards expected and introduce you to the behaviour and discipline required.

## AMONG OUR TUTORS:

Our Acting department consists of performers, writers, theatre makers and directors who have worked in theatre, television, community drama, and audio, in Liverpool and across the country.

Our Dance team are all specialist teachers in the styles and all have professional experience ranging from performing in Contemporary Dance Companies, to cabaret, cruise ships and the West End. Our staff are still active teaching, choreographing and performing in the dance industry.

Our Design for Performance team consists of LIPA (HE) alumni who are experienced industry professionals. They have worked in a variety of professional settings including theatre, live events, arts festivals in education, exhibitions and galleries such as Tate Liverpool. The team are all experienced teachers and continue to work freelance in the North West.

Our Music team consists of performers, writers and sound technicians who work regularly across a wide range of musical genres, and includes a GRAMMY-nominated musician.

Our Musical Theatre team are all specialist teachers who have a wealth of professional experience in their taught discipline, with most staff having worked in the West End. The team all actively still work in industry in roles such as director, choreographer and vocal coaches.

Our Technical Theatre team consists of LIPA (HE) alumni who are experienced industry professionals. They have worked in a variety of professional settings including theatre, live events and cruise ships. The team are all experienced teachers and continue to work freelance in the North West.

# INDUSTRY CONNECTIONS

Not only do we have our own extensive connections within the performing and creative arts industry, but our close links to LIPA allow us to benefit from its well-established international connections. Industry experts, some of them household names, give masterclasses, practical workshops and offer performance opportunities.

## INDUSTRY VISITORS TO LIPA SIXTH FORM COLLEGE HAVE INCLUDED:



### ROWAN ATKINSON

Olivier Award-winning comedian, actor and screenwriter



### SHARON & OZZY OSBOURNE

Music manager, promoter and media personality and Grammy Award-winning singer-songwriter



### GARY BARLOW

BRIT and Ivor Novello Award-winning songwriter, musician and producer



### NILE RODGERS

Rock and Roll Hall of Fame inductee and Grammy Award-winning songwriter, musician and producer



### DANNY BOYLE

Oscar and BAFTA-winning director and producer



### WILLY RUSSELL

Olivier and Tony Award-winning playwright



### PETER CAPALDI

BAFTA Award-winning actor, director and writer



### STEVE VAN ZANDT

Singer, songwriter, musician, producer and actor



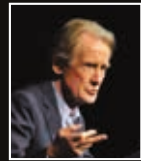
### STEPHEN FRY

Emmy Award-winning actor, writer, producer and broadcaster



### WILL YOUNG

Singer, songwriter, musician and actor



### BILL NIGHY

BAFTA and Golden Globe-winning actor





# OUR FACILITIES

Our £5.4 million redeveloped building is a purpose-built performing and creative arts college offering students specialist professional standard facilities and equipment.

## THESE INCLUDE:



THREE DRAMA STUDIOS



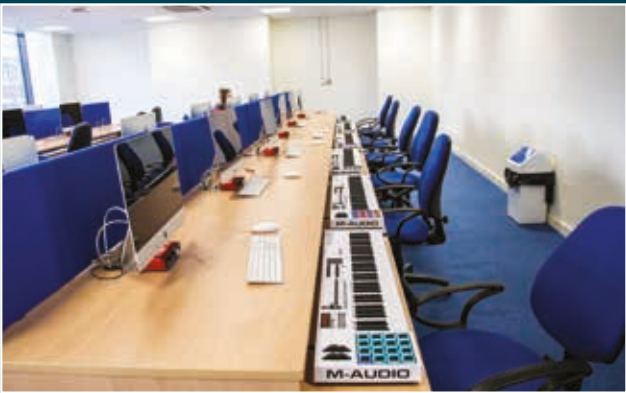
MUSIC RECORDING STUDIO



THE WILLY RUSSELL STUDIO



LEARNING RESOURCES CENTRE EQUIPPED WITH PCS AND CAREERS LIBRARY



MAC SUITE



TWO DANCE STUDIOS WITH SPRUNG FLOORS



SCENIC DESIGN AND CONSTRUCTION STUDIO



TUTORIAL ROOMS AND CLASSROOMS



CANTEEN



FOUR MUSIC REHEARSAL ROOMS





# STUDENT PROGRESSION

Our project-based learning produces resilient, versatile, independent learners. Our industry focus introduces them, and allows them to experience, the discipline and behaviours required to be a performing or creative arts professional. They leave us equipped to take the next step, whether that be into higher education or employment.

Typically, our pass rate is 99%\*, with 86%\* of students achieving high grades (merit or distinction).

Once they leave us, most go onto higher education or professional training programmes. Many enrol at a Conservatoire, Federation of Drama Schools (FDS) or Council for Dance, Drama and Musical Theatre (CDMT)-accredited performing arts institution.

We are now the largest FE college provider of students to the Liverpool Institute for Performing Arts.

\*Average of results 2021-2022

## CONSERVATOIRE AND PROFESSIONAL TRAINING DESTINATIONS FOR OUR LEAVERS INCLUDE:

- Academy of Contemporary Music
- Bird College
- Bristol Old Vic Theatre School
- Guildhall School of Music and Drama
- Leeds College of Music
- Liverpool Institute for Performing Arts
- Rambert School of Ballet and Contemporary Dance
- Royal Birmingham Conservatoire
- The Royal Central School of Speech and Drama
- Royal Northern College of Music
- Royal Welsh College of Music and Drama
- Urdang Academy

## OTHER HIGHER EDUCATION DESTINATIONS FOR OUR LEAVERS INCLUDE:

- ADDICT Dance Academy
- BIMM Manchester
- Dancebox Studios
- Falmouth University
- Institute of the Arts Barcelona
- London Studio Centre
- Shockout Arts
- The Arden
- Theatre Works
- The Hammond School
- UCLAN
- University of Liverpool
- University of London

There are impressive employment outcomes for those that chose not to go onto university or professional training.

For example, several music graduates have landed recording contracts. This includes one of our music graduates, who is the bass player with critically acclaimed Liverpool band The Mysterines, who have been championed by Paul Weller.

A number of acting graduates have gained agency representation, with companies such as JAG agency, which represents Elaine Paige and Michelle Collins.

One student got his first paid acting role on Sky Atlantic TV series 'Tin Star' and gained representation with Creative Artist Management: the same agency that represents Robson Green, Denise Welch and Ray Winstone. Another student landed her first professional role in BBC's comedy-drama 'The Responder', which stars Martin Freeman.

## LSFC Alumni



## Profile DAN LIGHT

**COURSE AT LSFC:** TECHNICAL THEATRE.

**CURRENT UNI/DRAMA SCHOOL/COLLEGE:** GUILDHALL SCHOOL OF MUSIC AND DRAMA.

**CURRENT COURSE:** PRODUCTION ARTS - TECHNICAL THEATRE.

This year I have had the opportunity to work on a number of different dramas and operas, as well as working on entirely student led productions.

I have met designers currently working in the industry and built connections. In my last year at LSFC we put on a performance called Fragments.

When we first started this performance it was going to be a museum style exhibition. Slowly there were actors, a script and costume.

By the time we reached the show it was a full on immersive performance. We had a cast, we had an air raid shelter, and we even had a working lampost

Throughout this process, we kept adding more and more: no one told us to stop or slow down. The tutors wanted to help us make the production we wanted to make.

This definitely wasn't exclusive to just my course either. Every single teacher, tutor and staff member would always do everything they could to help the students succeed.

LSFC taught me the skills to be able to improvise, to make the best of me and to make the best of any situation.

Working on shows we weren't just learning how to say the words, or how to put up a light. We were

learning how to work together, how to come up with creative solutions to problems and how to actually make something on our own.

LSFC also has state of the art facilities. You are practicing your skills using technology and equipment that is the standard in the industry.

Starting at LSFC is such a great opportunity. I would recommend making friends with people across all the departments, you will be collaborating with these people all the time and they will be able to support you.

By the end of your time at LSFC you will meet people you want to work with, whose work you admire, who do something better than anyone else in the world.

LSFC provides you with the opportunity to make these amazing contacts, it's up to you to collaborate with them.

LSFC will arm you with the skills to shape the industry the way you want it to be and use your creativity to make the work you want.

Take advantage of this opportunity, and utilise the facilities the college can offer you to make new projects with the people you have met.

The staff and students will always be there to support you and help you make the best of yourself.





# STUDY PROGRAMME

Each programme is a Level 3 UAL Extended Diploma qualification (equivalent to three A-Levels) and balances theory and practice in an engaging and inspirational way.

You explore and develop your interests and abilities as you apply your creativity and ambition to a wide range of real life, practical project-based learning opportunities.

You improve your skills in critical analysis and become a more autonomous learner, taking increasing responsibility for self-directed study in preparation for higher education. At the same time, you also build your professional profile for future work.

Throughout the two years, you are continually assessed and receive regular feedback from tutors. Successful completion of one of our programmes gives you the skills and knowledge to progress to studying your chosen discipline in Higher Education, or to go straight into work.

The depth, breadth and challenge of the curriculum for each qualification we offer is intense, and it is for this reason that we have decided not to offer additional qualifications such as A-Levels.

Studying at LIPA Sixth Form College does not fast-track you onto a degree at LIPA. You still have to apply through UCAS alongside applicants from other schools and colleges but studying with us undoubtedly increases the range of opportunities available to you.

## HOW MUCH WILL I STUDY EACH WEEK?

You have timetabled hours for classes and workshops across the week and are also expected to undertake your own independent study and practice. In the lead up to performances, you may need to work outside the usual study day. We give you advance notice about this.

## HOW WILL I BE ASSESSED?

We use a range of assessment methods, including presentations, portfolios, performances, practical tasks and written reflections.

Our communication with your parents/carers/guardians is important in helping you to not only progress in your studies, but also to your development as a highly motivated and self-reliant young adult.

In the first term, we hold an Information Evening for your parents/carers/guardians and there are also Parents' Evenings, which you will be expected to attend with your parents/carers/guardians.

## DO I HAVE TO CONTINUE STUDYING MATHS AND ENGLISH?

All students, regardless of GCSE attainment, are expected to make further progress in their communication and mathematical skills. Opportunities to do this are embedded in assignment tasks, as well as in work experience and other activities.

Although we expect our students to have achieved five GCSEs at grade 9-4/A\*-C, ideally including Maths and English, some students enrol without these grades in either Maths or English. In these cases, we support you to retake these subjects as part of your study programme.

Our GCSE lecturers use innovative approaches, informed in part by their own experience of working in the performing arts. In 2018, our Maths lecturer received a Silver Award from Pearson for FE Lecturer of the Year.

## WHAT EXTRA-CURRICULAR ACTIVITIES ARE OFFERED?

In addition to our work experience and enrichment opportunities, we offer a range of extra-curricular activities, tailored to match the interests of our students across all subject areas. In previous years, activities have included scriptwriting, directing, choir, ukulele club, and football. We also provide opportunities to go on relevant trips.

**OUR STUDENTS FOLLOW A TWO-YEAR STUDY PROGRAMME** in a creative or performing arts discipline in one of the following.:



TECHNICAL THEATRE



DESIGN FOR PERFORMANCE



ACTING



DANCE



MUSIC PERFORMANCE & PRODUCTION



MUSICAL THEATRE

INSPIRE  
*Achieve*  
PERFORM  
CREATE



# TECHNICAL THEATRE

Without a theatre or a technical team there would be no performance. A backstage team is vital to any show, gig, festival or event. This course equips you with the skills and knowledge needed to be part of this essential team within the performing arts industry. Whatever technical aspect you are interested in - lighting, sound, stage management or front of house - this course gives you the opportunity to experience them all.

## COURSE OVERVIEW

In Year 1, you develop your technical theatre skills, this includes lighting, sound, stage management and front of house. You have the opportunity to put these skills into practice by taking on a range of practical roles in a live setting and becoming part of a production team.

You also develop and create your own installation that showcases your technical skills, creativity and teamwork.

In Year 2, you continue to develop your technical skills and knowledge, specialising in an area of your choice. You work on a range of projects and live performances, concluding with a final major project.

You are given more responsibility and take on more senior roles within the production team.

On completing this course, you are able to apply for university or drama school or go into an entry level role in the industry.

Throughout both years, you work with students from other disciplines to put on a range of performances - some in our own theatre space and others at venues across Liverpool. You also benefit from workshops delivered by industry professionals.

Technical Theatre students worked with actors to create an installation called Fragments, looking at key points in Liverpool's history.

## COURSE HIGHLIGHTS

- Provide regular technical support for performances in our 100-seat Willy Russell Studio.
- Experience working with industry-standard technical theatre equipment.
- Collaborate with the Design for Performance students to create a live installation showcasing your work.
- Experience trips to regional and national arts venues, theatres and galleries.
- Work alongside students from other disciplines to put on a range of performances throughout the year
- Experience working in a live theatre environment that replicates the professional industry.
- Benefit from industry-experienced tutors who have a wealth of technical knowledge and performance experience and are still active in the industry.

## SKILLS TO BE DEVELOPED:

### Front of House

- Venue Management
- Marketing

### Lighting & Sound

- Design
- Programming
- Operating

### Research & Context

- Production design from text
- Presentation & portfolio building

### Stage Management

- Scheduling, Logistics & Budgeting of a production
- Show Calling & Management of the rehearsal room
- Prop Sourcing/Making

## WHAT OUR GRADUATES DO

Students, who have graduated from our Technical Theatre course, have gone on to study at:

- Guildhall School of Music & Drama
- Liverpool Institute for Performing Arts
- Mountview Academy of Theatre Arts
- Rose Bruford
- Royal Birmingham Conservatoire

## HOW DO I APPLY?

You can apply from **1 September** at [www.lipasixthformcollege.org/apply](http://www.lipasixthformcollege.org/apply) or contact [admissions@lipasixthformcollege.org](mailto:admissions@lipasixthformcollege.org). The deadline is **31 January**.

Auditions and interviews are in **February** and **March**, with decisions sent out in **April**. See pages **32 - 33** for more information.

Technical Theatre students gain experience of a range of professional equipment including lighting consoles and sound desks.



# DESIGN FOR PERFORMANCE

If you're passionate about the performing arts and have skills in art and design our course will equip you to be part of the creative team responsible for bringing a production to life. Whichever aspect you're interested in - costume or set design or the making skills involved in costume, props, puppetry and scenery - this course gives you a thorough grounding, before letting you refine your skills in your second year.

## COURSE OVERVIEW

In your first year, you develop your design skills, with a focus on set and costume, as you work on several projects across the year.

You provide design work and hands-on creative support in the form of painting and making for college performances, and get the chance to try out a number of design based roles, while you do so.

You also have the chance to showcase the knowledge you've acquired through creating a design-led installation for an immersive performance.

The second year builds on the skills and knowledge you have already acquired and gives you the option of focusing on a design-led approach of your choice.

You work on several projects during the year, concluding with a final major project, where you design set or costume and/or work to realise design elements for a final performance piece.

The skills gained during the course enable you to apply for university or go into an entry level role in design.

Throughout both years, you work with students and staff from other disciplines to put on a range of performances - some in our own theatre space and others at venues across Liverpool.

You also benefit from workshops delivered by industry professionals.

## COURSE HIGHLIGHTS

- Provide regular design work and creative support for performances in our 100-seat Willy Russell Studio.
- Experience trips to and workshops with inspiring local venues, galleries and creative organisations and individuals, along with some further afield.
- Collaborate with students and staff from other disciplines - including actors, dancers and musicians - to put on a range of performances throughout the year.
- Work with a wide variety of professional techniques and materials to develop your creative design and making skills.
- Showcase your creative design skills through working closely with technical theatre students to create a live installation piece with an emphasis on design and technical elements.
- Benefit from industry-experienced tutors who have a wealth of technical knowledge and performance experience and are still active in the industry.

## SKILLS TO BE DEVELOPED:

### Set & Costume Design

- Drawing skills - 2D sketchbook work & technical drawing
- Model making - working to scale in 3D

### Making & Construction skills

- 3D construction (props/puppetry/set)
- Sewing & costume construction
- Scenic painting

### Research

### Designing from text

### Presentation & portfolio building

## WHAT OUR GRADUATES DO

Students, who have graduated from our Design for Performance course, have gone on to study at:

- Birmingham City University
- Guildhall School of Music & Drama
- Leeds Arts University
- Liverpool Institute for Performing Arts
- Mountview Academy of Theatre Arts
- Rose Bruford
- The Northern School of Art
- University of the Arts London (UAL)
- University of Chester

## HOW DO I APPLY?

You can apply from **1 September** at [www.lipasixthformcollege.org/apply](http://www.lipasixthformcollege.org/apply) or contact [admissions@lipasixthformcollege.org](mailto:admissions@lipasixthformcollege.org). The deadline is **31 January**.

Auditions and interviews are in **February** and **March**, with decisions sent out in **April**. See pages **32 - 33** for more information.

Design students have successfully participated in the annual Royal Opera House Design Challenge, where they are asked to design set, costume or marketing material for an opera or ballet while receiving a brief and guidance from a ROH director and designer.

Design for Performance students regularly work on a variety of projects and participate in talks and workshops with creative companies such as Lantern Company, Zap Graffiti, Welsh National Opera, Everyman Theatre, Qdos Entertainment and Backstage Academy.



# ACTING

If you love acting, the chances are you're creative, curious and flexible. And these are the qualities needed to get the best out of our course. We help you to develop your versatility and performance skills across a range of genres - including contemporary theatre, classical theatre and devised performance. You are encouraged to embrace many different aspects of theatre making and if you play an instrument there are opportunities to use these skills as an actor-musician.

While studying with us, you increase your knowledge of the industry and gain valuable insights as to how your passion for acting can become a career. We also help you to improve your audition skills and prepare you to take the next steps - whether that be at a drama school, a university or directly into employment.

## COURSE OVERVIEW

In Year 1, you work on four key projects, including ensemble theatre and a commissioned piece. Alongside this, you develop your skills in voice and speech, physical theatre, acting techniques, singing and learn about the historical context of theatre.

By presenting your work in front of an audience - including full-scale productions and smaller 'sharings' of work to staff and fellow students - you develop your stagecraft and become more confident in the performance space.

In Year 2, you study acting innovations, playing with text, historical context, and the acting industry. You get to participate and perform in a Shakespeare project and practice and prepare for auditions.

There are opportunities to tailor the course to your developing interests in Year 2 as you get to choose an 'option'. Typically, these have included musical theatre, voice acting, directing, social and political theatre and clowning and mask.

Your final project is either a contemporary or classical, full-scale, theatrical production.

Throughout both years, you work with students from other disciplines to put on a range of performances - some in our own theatre space and others at venues across Liverpool. You also benefit from workshops delivered by industry professionals.

We encourage all students to develop their knowledge and skills in all areas because the more you can do, the more employable you are.

## COURSE HIGHLIGHTS

- Perform regularly in our 100-seat Willy Russell Studio.
- Participate in workshops and masterclasses with visiting professionals - past guests have included Danny Boyle, Peter Capaldi and Stephen Fry, along with many other performing arts practitioners, who work locally and nationally.
- Gain inspiration by participating in theatre visits locally and further afield - previous ones include London's West End, Royal Shakespeare Company in Stratford-upon-Avon and Royal Exchange Theatre in Manchester.
- Collaborate with students from other disciplines - including musicians, dancers and technical theatre and design students - to put on a range of performances throughout the year.
- Benefit from industry-experienced tutors with a wealth of acting, directing, writing and theatre-making knowledge and experience and who are still active in the industry.

## SKILLS TO BE DEVELOPED:

- Acting techniques
- Actor-Musician (if applicable)
- Audition preparation
- Classical performance
- Directing
- Physical Theatre
- Singing
- Text work
- Voice and speech

## WHAT OUR GRADUATES DO

Students who have graduated from our Acting course have gone on to study at:

- Bristol Old Vic Theatre School
- Essex University
- Falmouth University
- Guildhall School of Music & Drama
- Leeds Beckett University
- Liverpool Institute for Performing Arts
- Manchester College (The Arden)
- Royal Birmingham Conservatoire
- Royal Central School of Speech and Drama
- Salford University
- University of Central Lancashire
- University of Chester
- University of West London

## HOW DO I APPLY?

You can apply from **1 September** at [www.lipasixthformcollege.org/apply](http://www.lipasixthformcollege.org/apply) or contact [admissions@lipasixthformcollege.org](mailto:admissions@lipasixthformcollege.org). The deadline is **31 January**.

Auditions and interviews are in **February** and **March**, with decisions sent out in **April**. See pages **32 - 33** for more information.

Many young actors think that in order to be successful they have to be like someone else. We believe that your individuality and uniqueness is what will help you to be successful.



# DANCE

If you love to dance, no matter what style, our course will improve your skills, technique and versatility as we prepare you for a variety of dance career options. You'll develop an understanding of a wide range of disciplines, styles and approaches; improve your fitness and flexibility and experience what it's like to work at a professional level by taking part in sessions with visiting professional dancers and choreographers.

## COURSE OVERVIEW

In Year 1, you work on six different projects, each of which develops the attributes you need to be a successful professional dancer.

You develop your performance skills and specific techniques in five styles of dance, alongside singing and approaches to professional practice.

You have three formal performance opportunities, one as a studio performance at the start of the course, the next in our theatre as part of the Spring dance showcase, and then as part of a final major project towards the end of Year 1, although there will be a number of informal dance opportunities throughout the year.

By Year 2, you are ready to learn new styles and techniques. You'll undertake an external performance project in addition to performing in the Spring dance showcase.

If you're considering Higher Education or conservatoire study, you are supported through the UCAS application process. The year ends with a final dance performance project.

Throughout both years, you work with students from other disciplines to put on a range of performances - some in our own theatre space and others at venues across Liverpool.

Our dance students have regularly performed at the Can You Dance? convention, with workshops taught by LIPA Sixth Form College tutors.

## COURSE HIGHLIGHTS

- Perform regularly in our 100-seat Willy Russell Studio.
- Participate in workshops and masterclasses with visiting professionals - past guests have included Craig Wharmby teaching commercial dance, Ben Harris from Footloose in the West End and Megan Wilding from the Moulin Rouge.
- See dance performances by renowned dance companies (past trips have included Swan Lake by Matthew Bourne and Giselle by the English National Ballet, plus trips to musicals such as Fame, 42nd Street, Mary Poppins and Billy Elliot).
- Collaborate with students from other disciplines - including actors, dancers and technical theatre and design students - to put on a range of performances throughout the year.
- Benefit from industry-experienced tutors who have a wealth of dance knowledge and performance experience and are still active in the dance industry.

## SKILLS TO BE DEVELOPED:

- Advanced performance
- Choreography
- Classical ballet
- Commercial dance
- Contemporary dance
- Creating dance
- Industry jazz
- Musical theatre
- Singing for auditions
- Theatre jazz
- Urban dance

## WHAT OUR GRADUATES DO

Students, who have graduated from our Dance course, have gone on to study at:

- Addict Dance Academy
- Bird College
- Italia Conti
- Kingston University
- Liverpool Institute for Performing Arts
- London Studio Centre
- Middlesex University
- Rambert School of Ballet and Contemporary Dance
- Shockout (University of Bolton)
- The Hammond School
- Wilkes Academy

## HOW DO I APPLY?

You can apply from **1 September** at [www.lipasixthformcollege.org/apply](http://www.lipasixthformcollege.org/apply) or contact [admissions@lipasixthformcollege.org](mailto:admissions@lipasixthformcollege.org). The deadline is **31 January**.

Auditions and interviews are in **February** and **March**, with decisions sent out in **April**. See pages **32 - 33** for more information.

Our dancers enjoy yearly trips to London to see West End shows, participate in workshops and attend the MOVE IT convention.



# MUSIC PERFORMANCE & PRODUCTION

If you live and breathe music, we'll set you on the path to a career in the industry. This could be as a singer or backing vocalist, session musician, band member, songwriter or composer, or sound engineer. Our project-based learning approach helps you develop your knowledge of practice and theory, while our industry-experienced teaching staff help you grow your performance and technical skills.

## COURSE OVERVIEW

In Year 1, you focus on developing your performance and technical skills through participating in a range of activities designed to simulate real industry situations.

With each new project you have the choice of following either a performance pathway, or a production pathway. Each pathway will teach you the history and theory behind the discipline while allowing you to learn in an active environment using industry standard equipment.

By Year 2, you are ready to work on a number of self-directed projects that allow you to specialise in your own areas of musical interest. If you're considering Higher Education or conservatoire study, you are supported through the UCAS application process.

You continue to learn about the music industry, music theory, composition and studio production.

The year concludes with a self-designed music project that allows you to fully explore the area of the industry that you are most passionate about.

Throughout both years, you work with students of other disciplines to put on a range of performances - some in our own theatre space and others at venues across Liverpool. You'll also benefit from workshops by industry professionals who share their knowledge and experience with you.

Our LIPA Sixth Form College choir has performed several times at Anfield, home of Liverpool FC, to an audience of thousands of football fans on match days

## COURSE HIGHLIGHTS

- Perform in our 100-seat Willy Russell Studio and in our weekly Soundcheck Sessions, and at external venues across the Liverpool area.
- Participate in workshops and masterclasses with visiting professionals - past guests have included Will Young, Nile Rodgers and Sharon and Ozzy Osbourne.
- Experience regular trips to venues, exhibitions and networking events such as the British Music Experience and Off The Record in Manchester.
- Collaborate with students from other disciplines - including actors, dancers and technical theatre and design students - to put on a range of performances throughout the year.
- Benefit from industry-experienced tutors who have a wealth of musical knowledge and performance experience and are still active in the music industry.

## SKILLS TO BE DEVELOPED:

- Academic research and writing
- Composition
- Electronics
- Foley
- Live sound engineering
- Music business
- Music theory
- Performance
- Sequencing
- Songwriting
- Studio production

## WHAT OUR GRADUATES DO

Students who have graduated from the Music Performance & Production course at LIPA Sixth Form College have gone on to study at:

- Academy of Contemporary Music
- BIMM
- Futureworks
- Leeds College of Music
- Liverpool Institute for Performing Arts
- Royal Northern College of Music
- Salford University
- University of Huddersfield
- University of Leeds
- University of Liverpool

## HOW DO I APPLY?

You can apply from **1 September** at [www.lipasixthformcollege.org/apply](http://www.lipasixthformcollege.org/apply) or contact [admissions@lipasixthformcollege.org](mailto:admissions@lipasixthformcollege.org). The deadline is **31 January**.

Auditions and interviews are in **February** and **March**, with decisions sent out in **April**. See pages **32 - 33** for more information.

The End of an Era gig for Year 2 Music students was held at the Liverpool Philharmonic's Music Room, voted Best Live Venue two years running.



# MUSICAL THEATRE

As a Musical Theatre student, you are likely to be energetic and creative - with lots of stamina, which is just what you need for our course. We'll work on developing your versatility as you improve your acting, dance and singing skills and introduce you to the different career paths available in Musical Theatre. You'll also discover what it's like to work at a professional level by taking part in sessions with visiting professional performers, directors and choreographers.

## COURSE OVERVIEW

You study the three key aspects of Musical Theatre: acting, dancing and singing, across a range of musical theatre styles.

Your first year is spent developing your skills and techniques in each aspect of musical theatre, while learning about the musical theatre industry. You have many performance opportunities at a range of venues, to a range of audiences, including a children's theatre performance and a musical theatre showcase.

In your second year, you look at the history and context of musical theatre, ranging from the classics up to contemporary performance.

You also receive guidance on preparing a professional portfolio and for auditions for conservatoires, university and the musical theatre industry.

Your final project will be a full musical production that allows you to work with a live band and to collaborate with our Technical Theatre and Design for Performance students.

Musical Theatre students took part in Echo Eternal, a commemorative arts engagement programme inspired by Holocaust survivor testimony, to promote respect and understanding between different communities.

## COURSE HIGHLIGHTS

- Perform regularly in our 100-seat Willy Russell Studio, and other external venues.
- Participate in workshops and masterclasses with visiting professionals - past guests have included Gary Barlow, Danny Boyle and Stephen Fry and Bill Nighy.
- Experience regular trips to inspirational musical theatre productions.
- Collaborate with students from other disciplines - including actors, dancers and technical theatre and design students - to put on a range of performances throughout the year.
- Benefit from industry-experienced tutors who have a wealth of musical theatre knowledge and performance experience and are still active in the industry.

## SKILLS TO BE DEVELOPED:

- Academic research and writing
- Acting Practitioners
- Acting Technique
- Audition technique and preparation
- Collaborative performance
- Creating a professional portfolio
- Dance Technique for musical theatre (different styles), including Ballet, Jazz, Tap and Musical Theatre
- Historical Context
- Vocal technique

## WHAT OUR GRADUATES DO

Students who have graduated from the Musical Theatre course at LIPA Sixth Form College have gone on to study at:

- The Arden School of Theatre
- Arts Ed
- Guildford School of Acting
- Institute for Contemporary Theatre Manchester
- Leeds Conservatoire
- Royal Welsh College of Music and Drama
- University of West London

## HOW DO I APPLY?

You can apply from **1 September** at [www.lipasixthformcollege.org/apply](http://www.lipasixthformcollege.org/apply) or contact [admissions@lipasixthformcollege.org](mailto:admissions@lipasixthformcollege.org). The deadline is **31 January**.

Auditions and interviews are in **February** and **March**, with decisions sent out in **April**. See pages **32 - 33** for more information.

The Musical Theatre team love a flash mob and the group performed in several venues such as Liverpool ONE, John Lewis and the Anglican Cathedral. Where will they appear next?





# STUDENT SUPPORT

All students benefit from the support of their lecturers and visiting professionals. You also have a personal tutor, who gives you regular feedback to help you keep on track. Each student has a personalised study programme, along with a range of enrichment programme opportunities. Students with specific support needs can access specialist support.

## STUDENTS WITH ADDITIONAL NEEDS

We welcome applications from everyone with a passion for the creative and performing arts. If you have additional needs, a disability or medical needs, we would advise you to let us know about these early so that we can ensure appropriate adjustments are made at audition, if necessary.

For example, if you have an Education, Health & Care Plan (EHCP), please share a copy of this with us before your interview/audition so that we can follow it to make sure you are able to perform at your best in the interview/audition.

You may also wish to have an informal confidential discussion with our Inclusion Manager before submitting your application, so that we can support you through the application process. Please telephone 0151 330 3232 or email [inclusion@lipasixthformcollege.org](mailto:inclusion@lipasixthformcollege.org) in the first instance.

Once you have accepted a place with us, please expect our SENDCO and inclusion team to contact you to help develop your study programme. This will ensure that any support you need during your studies can be identified and put into place, ready for when you join us.

## LECTURERS AND INDUSTRY CONTACTS

Your lecturers and visiting industry professionals are important contacts and sources of support and guidance during your studies. They provide you with regular feedback on your progress, and teach and guide you towards achieving your professional goals. They are also important sources of information about careers and university-level study opportunities.

## PASTORAL PROGRAMME

When you arrive here, you are assigned a personal tutor, who is your main contact for your day-to-day needs. You meet with your personal tutor and a small group of students on a regular basis, and also benefit from regular individual tutorials, during which you can discuss your progress. Your personal tutor receives feedback from your discipline lecturers and also monitors your attendance.



## EXPERIENCE OF WORK

In addition to your studies, you are offered the opportunity to carry out work experience, both in college and outside.

Placements are arranged to complement areas related to your studies and/or career ambitions.

These opportunities give you valuable experience across a range of activities both within and outside your chosen discipline.

We also provide ongoing information and support to help you decide what you want to do when you leave us.



## EMPLOYABILITY AND ENRICHMENT

You enjoy a wide range of opportunities to enrich your learning and professional development beyond your study programme. For example, you may have a chance to:

- Contribute to the production of performances on various scales, such as in our own Willy Russell Studio Theatre or at an external performing arts venue or event.
- Participate in masterclasses, seminars and workshops led by visiting professionals, who may also provide teaching for performance projects. For example, this might involve you taking direction from a commercial dance choreographer or a West End director.
- Attend performances and masterclasses at LIPA and at other creative and performing arts venues across Liverpool and the wider City Region.
- Engage in community arts projects and be involved with the wider community as an integral part of our activities.
- Participate in activities which help you to develop socially, morally, culturally and spiritually.
- Receive guidance on applying to conservatoires or universities, or on going into work.
- Take part in any of a range of enrichment activities.







# MONEY MATTERS

There are no fees to study at LIPA Sixth Form College and we provide free school meals to those students who meet the means-tested criteria. Sometimes, there are costs attached to additional opportunities, such as trips and optional enrichment activities.

## BURSARIES

Bursaries are available to support students with the costs associated with attending college. These are available to those students who meet the specific criteria for each bursary. Each can be applied for once a student has enrolled, and may be means-tested:

- Income-Assessed Bursary for students whose family income is below £25,000 per year.
- Guaranteed Bursary for students who are in, or have recently left, local authority care, or who are in receipt of specific benefits or payments, for example, linked to their disabilities.
- Free School Meals

## ACCOMMODATION

If you don't live locally - or within easy travelling distance - you may consider finding accommodation in Liverpool during term-time. The city has a wide range of accommodation opportunities available for students.

Please note that LIPA Sixth Form College is unable to recommend any individual accommodation provider, and cannot accept any responsibility for any accommodation arrangements that students or parents/carers/guardians might make.

Please also note that due to the nature of our funding, we are unable to accept applications from students who do not live in mainland UK - for example, from the Channel Islands or the Isle of Man.



# CAREERS GUIDANCE

We provide our students with a comprehensive programme of careers guidance.

This includes:

- Support with applying to universities via UCAS
- Support with applying to conservatoires through CUCAS
- Guidance with the application and decision making process
- Support with reflective tasks such as personal statements and CV building
- The opportunity to attend relevant Higher Education fairs
- Work experience opportunities

As well as attending large-scale events such as 'UCAS Create your Future', we also run our own careers event on site.

Both events are attended by leading Higher Education institutions giving students the chance to speak directly with universities and conservatoires about the next steps they need to take to fulfil their goals.

Our emphasis on progression means that students are encouraged to seek out opportunities to improve their employability skills within the safe environment of the college.

This involves responding to live briefs, often set by external organisations (such as music gigs, dance performances or design competitions).







# WHAT ARE WE LOOKING FOR?

Put simply, you can't imagine doing anything other than what you love, and, potentially, going on to make a living from it - whether that means acting, dancing, playing an instrument or performing in a band, or making performance possible, through music production, set or costume design, lighting, sound design or stage management.

There is as much variety in our student body as there are opportunities within the creative and performing arts. But don't worry - you don't necessarily need to know exactly what you want to be or do in the future. What matters is that you are dedicated and committed to working hard and can show us that you have the aptitude to succeed.

We do not ask for any specific creative and/or performing arts subjects to have been studied at GCSE. This is deliberate. We know that you may not have had the same opportunities as someone else - perhaps your school doesn't offer Dance at GCSE, the only drama group is too far away or too expensive or you can't afford the latest software that would make your recordings sound even better.

We don't feel that a lack of previous opportunity should prevent applicants to LIPA Sixth Form College with real potential - even in its rawest form - from accessing and benefiting from our industry-experienced learning.

This belief is reflected in our approach to applications.

## MINIMUM GCSE REQUIREMENTS



Entry to all our Level 3 Extended Diploma courses will require a predicted minimum of five GCSEs at grade 9-4/A\*-C, ideally including Maths and English.

If you enrol on a course with us and you do not possess a grade 4/C in Maths and/or English, we will support you to retake these subjects as part of your study programme. However, as retaking these GCSEs will be an additional demand on your time, it is in your interest to work to pass them the first time round.

All students, regardless of GCSE attainment, will be expected to make further progress in their communication and mathematical skills. Opportunities to do this will be embedded in course assignment tasks, as well as in work experience and other activities.

# ATTRIBUTES

Your natural ability, your fit with what and how we teach, your commitment to personal and discipline-related development and your potential are key factors in our admissions process. We can't evaluate these based solely on your predicted grades at GCSE, so we also look for other ways to confirm your suitability for our courses.

**IN ORDER TO ASSESS YOUR COMMITMENT AND POTENTIAL, WE HAVE IDENTIFIED SIX ATTRIBUTES WE FEEL YOU NEED, TO GIVE YOURSELF THE BEST CHANCE OF SUCCESS WITH US:**



### KNOWLEDGE, ABILITY AND EXPERIENCE IN YOUR DISCIPLINE

We would like you to have some experience in your discipline, gained either through opportunities at school or in your spare time. Good examples of this may be through your involvement in school productions (either performing or backstage), through youth theatre, school choir or orchestra, or through developing your own interests in design or technology. Your course is likely to cover a range of creative and performing approaches within your chosen discipline, so you need to be willing to have a go at everything.



### SELF-AWARENESS

We would like to know why you are applying to us - how do you think your course will help you to grow, and what can you bring to your studies? What are you good at, and what would you like to be able to do better, or more of? As we begin to get to know you better, we can help you begin to work more effectively towards your further study and/or career aspirations.



### A SPIRIT OF ENTERPRISE

We want you to be able to work on your own initiative and see that you are interested in creating your own opportunities. Even if you haven't had much opportunity to be involved with projects that were not part of your regular school/college curriculum, your ideas and enthusiasm will go a long way.



### COMMITMENT TO YOUR DISCIPLINE

We would like to see that you have begun to develop your interest for your discipline by doing more than just looking for creative and/or performing opportunities either at school or in your spare time. While distance or cost may have stopped you from gaining formal experience, signs that you read about the subject, make efforts to see other people active within the discipline you wish to study and can talk with enthusiasm about your subject will support your application.



### ABILITY TO WORK EFFECTIVELY WITH OTHERS

We would like you to be able to work well with others. While you are with us, you will work with a wide range of people - teachers, industry professionals and other students. We would like to see that you are open to learning from other people, that you can listen to them and see their point of view (even if it's not the same as yours) and that you can offer constructive feedback.



### BROAD INTEREST AND ENGAGEMENT

We would like to see that you are curious about the world around you, that you are keen to share your experience and learn from the experience of others and that you are willing to get involved with the wide range of opportunities we offer.



# HOW TO APPLY



As a local Sixth Form College, most of our students are likely to come from Liverpool and the wider region.

If you live further afield, you are welcome to make an application, but as we do not offer any residential accommodation for students, you will need to make your own travel and/or living arrangements.

We welcome applications from everyone with a passion for the creative and performing arts - information on the range of support we offer for students with SEN or disabilities can be found on page 26.

## MAKING YOUR APPLICATION

### 1 APPLICATION FORM

The first step in applying to us is to complete an application form. If you have any queries contact LSFC Admissions Officer at [admissions@lipasixthformcollege.org](mailto:admissions@lipasixthformcollege.org).

In order to successfully move onto the second stage of the applications process - an interview and audition/submission of portfolio of work relevant to the chosen discipline you wish to study - you will need to be predicted by your school to achieve at least 5 GCSEs at grade 4/C and above.

Your school/nominated referee will need to provide us with confirmation of your predicted grades.

In addition to general information about you, your education and ambitions, the application form will ask you to answer a number of questions related to the discipline you wish to study.

This is designed to give you the chance to give details of any relevant practical experience you have (don't worry if you don't have any!) and to explain why you feel the course you have chosen is right for you (and vice versa).

### 2 INTERVIEW AND AUDITION/ SUBMISSION OF PORTFOLIO

Based on the information on your application form, and your reference, you may be invited to attend an interview and audition or - in the case of Technical Theatre and Design for Performance - to submit a portfolio of work relevant to your chosen course.

These will take place during February/ March, and we will give you guidelines to help you prepare.

If you are successful at your interview and audition/submission, you will be sent a decision email offering you a place for September entry in April. Depending on your circumstances, this may be a conditional or an unconditional offer.

### 3 RESULTS AND CONFIRMATION OF YOUR PLACE FOR ENTRY

If you have a conditional offer, your place will be confirmed in August, if your GCSE results match or exceed your predicted grades. (If you don't achieve a minimum of Grade 4/C in English Language and/or Maths, we will support you to retake these subjects alongside your Level 3 Extended Diploma studies).

You'll then be able to enrol with us, and we'll provide you with all the information you need ready for the start of term in September.

For all admissions enquiries please email our Admissions Officer at [admissions@lipasixthformcollege.org](mailto:admissions@lipasixthformcollege.org)

You may wish to have an informal, confidential, discussion with our SENDCO/Inclusion Manager before submitting your application - please telephone **0151 330 3232** or email [admissions@lipasixthformcollege.org](mailto:admissions@lipasixthformcollege.org) in the first instance.

# APPLICATIONS CALENDAR FOR SEPTEMBER ENTRY

If you like what you've read, and feel that we could be the right choice for you, then we'd like to hear from you.

## THE TIMESCALE FOR APPLYING TO US IS:



## Advice ON APPLYING

Don't rush - although the forms are available from 1st September, you will have plenty of time before the 31st January deadline to write your application.



### THINK

Before completing the application form, talk to friends, parents and teachers, and think about why you want to study with us: what can you give us and what can we give you?



### WHAT MAKES YOU DIFFERENT?

Although you may always have wanted to be a singer, dancer, musician or technician, saying so won't necessarily make your application stand out.



### THINK ABOUT WHAT MAKES YOU DIFFERENT

Your inspirations, your influences, your ambitions: these are just as important as your experience in helping us make our decisions.



### BE ORGANISED

Make a note of relevant dates (the list opposite should help) to make sure you are well prepared to meet any deadlines in the application process - whether that is completing your online application form or turning up for your interview and/or audition.



### GIVE US TIME

We will start shortlisting at the end of March, once all interviews and auditions have finished, we will let you know whether you are being offered a place for September in April - please do not contact us before this date, as we will not be able to give you our decision any earlier.



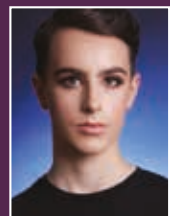
### DON'T STRESS

Applying for Sixth Form College is a big step, but staying calm and spending some time on your application before submitting will help a lot. The same advice goes for interviews and auditions - think of it all as useful life experience.

Need any help or advice? please email our Admissions Officer at [admissions@lipasixthformcollege.org](mailto:admissions@lipasixthformcollege.org)



# WHAT OUR STUDENTS SAY



JAMIE FISHER

**Studied Dance**

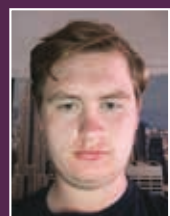
From the moment I walked through the doors at LSFC I felt a real sense of family. I was welcomed with open arms by all members of staff and was encouraged to be the best version of myself on a daily basis. The technical training was phenomenal and challenging for all the right reasons. The teachers know you on a personal basis and know all your strengths and weaknesses, giving you one-to-one training sessions and tips on improvement. Liverpool is an amazing city to study in and its diversity helps you grow as a performer. Thanks to my training I was offered a place at four of the most prestigious dance institutions in the country. My ambition is to be a West End performer, and I thoroughly believe my time at LSFC has set me on that path.



NATASHA DOWD

**Studied Acting**

What I really love about LSFC is how varied the classes and activities were. On the Acting course I got to do everything from Voice Acting to Clowning. The tutors, who are all industry experienced, were amazing at pushing me out of my comfort zone and really challenging me. Every day felt like I'd learnt something new. It was certainly never boring. My confidence, along with my ability, have both developed during my time there. I've had opportunities both inside and outside of college that have helped me focus on what my end goal is, resulting in my successful application to Leeds Conservatoire to study on their Actor Musician course. All of this has been possible because I came to LIPA Sixth Form College. I wouldn't have received the same opportunities elsewhere.



LEWIS HARPER

**Studied Technical Theatre, English & Maths**

I first became interested in technical theatre while working on school productions and decided to go to LSFC after attending an open day. What I love most about studying at LSFC is the staff. The support you receive is massive and you'll often find them going above and beyond to ensure students are happy and comfortable. Every single member of staff wants nothing but for the students to succeed. It truly is a special place. The facilities are great and working on industry standard equipment has allowed me to excel and already take my skills to bigger venues. My ambition is to be a touring production electrician and lighting programmer. LSFC has put me on the right path to achieving this.



PETER WINTERSGILL

**Studied Music Performance & Production**

During my time at LSFC, I had the time of my life, drastically developing in my musical ability and more specifically, developing my professional attitude towards music as an industry. My two years at LSFC were packed full of incredible moments that tested me and pushed my abilities to levels I thought would take years to achieve. The level of help and support I received from my tutors was above and beyond any previous teachers from high school and they really set the bar high for what it means to be a musician in the modern day. Going to LSFC is an experience I will never forget. It is tough and you will be pushed to your limits but with a high work ethic and a passion for your study, whether it be music like myself or another discipline, it will truly be two of the best years of your life.

*Be* PART *of* SOMETHING AMAZING

JOIN US AT  
**LIPA SIXTH FORM COLLEGE**

**WHERE PERFORMANCE MATTERS**



INSPIRE  
*Create*  
PERFORM  
ACHIEVE

LIPA  
SIXTH FORM  
COLLEGE

WHERE PERFORMANCE MATTERS

41 Upper Duke Street, Liverpool L1 9HF

☎ +44 (0)151 330 3232 ✉ [admissions@lipasixthformcollege.org](mailto:admissions@lipasixthformcollege.org)

🌐 [www.lipasixthformcollege.org](http://www.lipasixthformcollege.org)